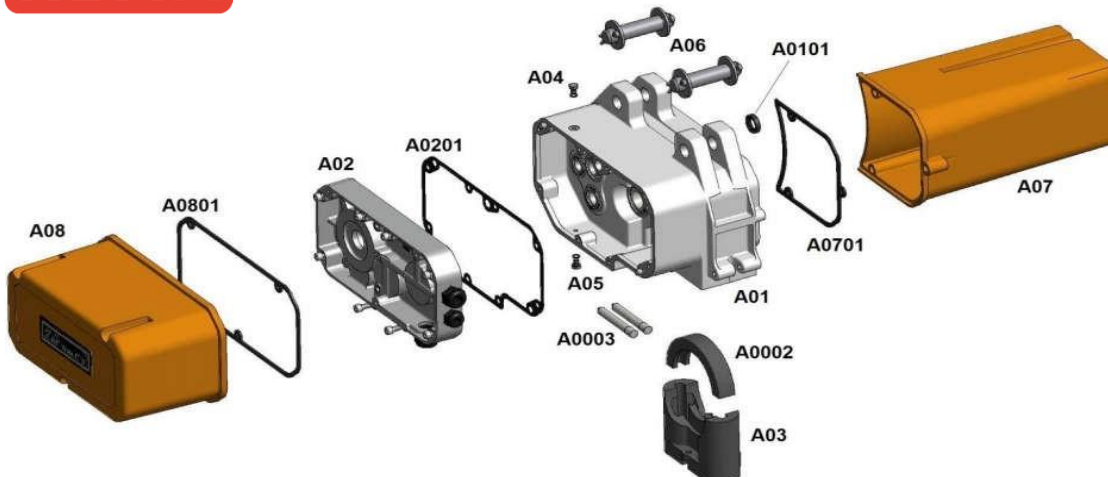
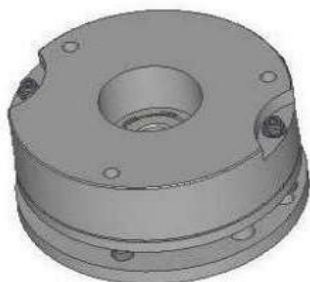




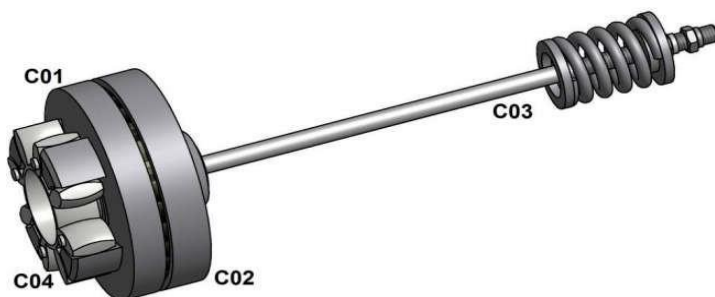
REMA SR 09../.



Part number	Discription	Rema article number
A01	REMA SR 09../. HOUSING	
A02	REMA SR 09../. GEAR COVER COMPLETE	
A0201	REMA SR 09../. GASKET SET	4512175
A0002	REMA SR 09../. DOWN PRESSURE PART 9,0 MM	4512158
A03	REMA SR 09../. CHAIN GUIDE 9,0 MM COMPLETE EXCL. LIMIT SWITCH	4512157
A03	REMA SR 09../. CHAIN GUIDE 9,0 MM COMPLETE INCL. LIMIT SWITCH	4512159
A06	REMA SR 09../. BOLT SET (Ø18 mm x 95mm x 75 mm)	4512908
A07 + A0701	REMA SR 09../. COVER ELECTRIC CONTROL COMPLETE	4512155
A07 + A0701	REMA SR 091/57 091/58 COVER ELECTRIC CONTROL COMPLETE	4512153
A08 + A0801	REMA SR 09../. COVER GEARSIDE COMPLETE	4512152
A08 + A0801	REMA SR 091/57 091/58 COVER GEARSIDE COMPLETE	4512150



Part number	Discription	Rema article number
	REMA SR 090/52 091/51 091/52 BRAKE COMPLETE	4512209
	REMA SR 090/54 090/55 091/56 091/57 091/58 BRAKE COMPLETE	4512211



Part number	Discription	Rema article number
C01	REMA SR 09../. CLUTCH DRIVE DISC COMPLETE	4512320
C02	REMA SR 09../. CLUTCH DISC COMPLETE	4512321
C02	REMA SR 09../. CLUTCH DISC COMPLETE (FROM SERIAL 800000)	4512322
C03	REMA SR 09../. ACCESSORY FOR CLUTCH	4512323
C03	REMA SR 090/52 091/51 091/52 ACCESSORY FOR CLUTCH	4512326
C04	REMA SR 09../. GEAR RIM	4512224
C04	REMA SR 09../. GEAR RIM (UNTIL SERIAL D20758)	4512227



Part number	Description	Rema article number
D0101	REMA SR 09../. SPROCKET WHEEL 9.0 MM COMPLETE	4512485
D0101	REMA SR 09../. SPROCKET WHEEL 9.0 MM COMPLETE (FROM SERIAL 800000)	4512487



Part number	Description	Rema article number
	REMA SR 09../. RAS LOADCHAIN 9.0 MM x 27 MM	0420007



LIFTKET			
Type	091/51	Fabrik-Nr./serial no.	0920144
Leistungs-/load factor	1	KLUBW 90L8-2	60 / 25/10
Transmiss./W.L. ratio	1000	1000	200
Wahl-/speed (rpm/min)	2.872.00	0.37/1.00	1.00/3.00
Kabel-/cable (mm)	0x27	EN 1210-2, DMT	4.00/3.00
PEM/ISO Motor-/chain	2x1/700	2778/1030/min	20V AC
Prof-Nr./cert no	NO F3/13-124119380-04.1	DGUV V 54 (D8)	CE



Part number	Description	Rema article number
F01	REMA SR 090/52 MOTOR (400v, 50Hz, 3ph 90L2)	4512431
F01	REMA SR 090/54 090/55 MOTOR (400v, 50Hz, 3ph 90L4)	4512433
F01	REMA SR 091/51 091/52 MOTOR (400v, 50Hz, 3ph 90L8/2)	4512435
F01	REMA SR 091/56 MOTOR (400v, 50Hz, 3ph 100L8/2)	4512429
F01	REMA SR 091/57 091/58 MOTOR (400v, 50Hz, 3ph 100V8/2)	4512975
F0101	REMA SR 090../. FAN COVER (MOTOR TYPE 90)	4512464
F0101	REMA SR 090../. FAN COVER (MOTOR TYPE 100)	4512459
F0102	REMA SR 09../. FAN IMPELLOR (MOTOR TYPE 90)	4512467
F0102	REMA SR 09../. FAN IMPELLOR (MOTOR TYPE 100)	4512468
F0103	REMA SR 09../. CLUTCH HUB	4512329



Part number	Description	Rema article number
N01	REMA SR 09../. HOOK SUSPENSION	0806105
N01	REMA SR 090/56 HOOK SUSPENSION	0806107
N0101	REMA SR 09../. SAFETY LATCH	4512902



Part number	Description	Rema article number
M01	REMA SR 09../. SUSPENSION EYE SINGLE HOLE 9,0 X 27MM 3200 KG	0825106
M02	REMA SR 09../. SUSPENSION EYE DOUBLE HOLE 9,0x 27 MM 3200 KG	0810307



P01



P0101



P0102

Part number	Discription	Rema article number
P01	REMA SR 09../.. LOAD HOOK SINGLE FALL 9,0x27 1600KG	0808107
P0101	REMA SR 09../.. RUBBER BUFFER SINGLE FALL LOAD HOOK 9,0MM	4512939
P0102	REMA SR 09../.. SAFETY LATCH	4512899



O01



O0103



O0104

Part number	Discription	Rema article number
O01	REMA SR 09../.. LOAD HOOK DOUBLE FALL 9,0MM 3200KG	0809109
O0103	REMA SR 09../.. RUBBER BUFFER DOUBLE FALL LOAD HOOK 9,0 MM	4512936
O0104	REMA SR 09../.. SAFETY LATCH	4512903



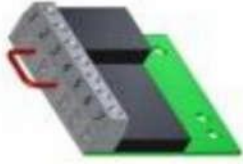
Q01

Part number	Discription	Rema article number
Q01	REMA SR 09../.. LIFT LIMITER COMPLETE 9,0 MM+BUFFER	4512004



R02

Part number	Discription	Rema article number
R02	REMA SR 09../.. CHAIN BOX CANVAS 9,0MM 10 MTR	4516130
R02	REMA SR 09../.. CHAIN BOX CANVAS 9,0MM 18 MTR	4516131
R02	REMA SR 09../.. CHAIN BOX CANVAS 9,0MM 30 MTR	4516132
R02	REMA SR 09../.. CHAIN BOX CANVAS 9,0MM 40 MTR (+ DISCHARGE)	4516133
R02	REMA SR 09../.. CHAIN BOX CANVAS 9,0MM 50 MTR (+DISCHARGE)	4516134
R02	REMA SR 09../.. CHAIN BOX CANVAS 9,0MM 60 MTR (+DISCHARGE)	4516145
R02	REMA SR 09../.. CHAIN BOX CANVAS 9,0MM 75 MTR (+DISCHARGE)	4516147



Part number	Discription	Rema article number
	REMA BRAKE RECTIFIER	4512712



Part number	Discription	Rema article number
	REMA SR XES-D-2201 CONTACTOR BLOCK 1 SPEED	4447019



Part number	Discription	Rema article number
	REMA SR XES-D-1291 CONTACTOR BLOCK 2 SPEED	4447017



Part number	Discription	Rema article number
	REMA SR XAC-S-499 CONTACTOR BLOCK EMERGENCY STOP	4447056



Part number	Discription	Rema article number
1	REMA SR ZA2-BS-54 EMERGENCY BUTTON WIDE	4447136
2	REMA SR XAC-B-9111 RUBBER LOW WHITE	4447060
3	REMA SR XAC-B-9112 RUBBER LOW BLACK	4447057
4	REMA SR XAC-B-9211 RUBBER HIGH WHITE	4447059
5	REMA SR XAC-B-9212 RUBBER HIGH BLACK	4447058



1



2

Part number	Description	Rema article number
1	REMA SR ZB2BE101 24V 1 SPEED CONTACTOR BLOCK (NO)	4447128
2	REMA SR ZB2BE102 24V 1 SPEED CONTACTOR BLOCK (NC)	4447130



Part number	Description	Rema article number
	REMA SR ZB2BE201 24V 2 SPEED CONTACTOR BLOCK (NO)	4447131



Part number	Description	Rema article number
	REMA SR XEN-G-1191 24V 2 SPEED CONTACTOR BLOCK	4447132



1



2



3

Part number	Description	Rema article number
1	REMA SR ZA2-BS-54 EMERGENCY BUTTON WIDE	4447136
2	REMA SR XAC-A-9411 24V PUSH BUTTON WITHE	4447142
3	REMA SR XAC-A-9412 24V PUSH BUTTON BLACK	4447140



1



2

Part number	Description	Rema article number
1	REMA SR 09../. K1 CONTACTOR	4514113
2	REMA SR 09../. K4 CONTACTOR	4514115



Part number	Description	Rema article number
	REMA SR 09../. K2/K3 CONTACTOR	4514114



Part number	Description	Rema article number
	REMA SR 09../. TRANSFORMER 230-400V/24V	4514121