

# 5

Electric trolley's for Elephant

46

REMA SR trolley

48



## Elephant MAS electric trolleys



This trolley is only available in combination with an elephant FAH / FBH electric hoist 400V.

### Properties

- Single axle design.
- 1 driving speed.
- Wheel rupture supports and tilting protection provides extra safety.
- Including 24V push-button box with emergency stop.
- Simple plug connection.

### Technical properties

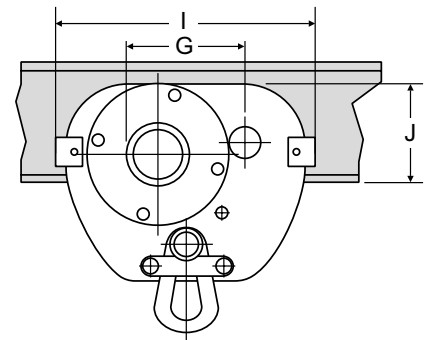
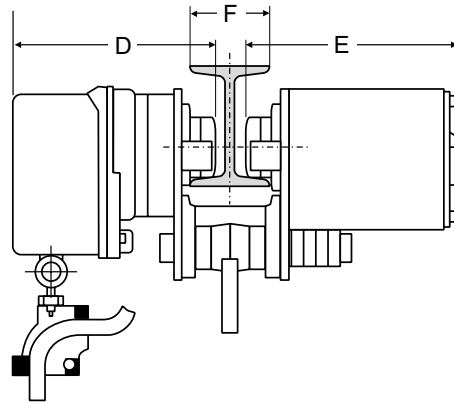
- Driving speed 10 m/min
- Operation voltage 400V
- Control voltage 24V
- Protection class IP54
- Duty cycle 120 sch/h 30%
- Isolation class E
- Motor power 0.4 kW

### IMPORTANT:

- Always specify flange width in mm.

### Norm:

- EN12100-1/2, EN13157



Type	WLL (kg)	D (mm)	E (mm)	F (mm)	G (mm)	I (mm)	J (mm)	Min. radius (mm)	Weight (kg)	ProductId
MAS-0.5	500	228	248	75-300	120	242	102	1100	31	0920001
MAS-1.0	1000	228	248	75-300	120	242	102	1100	31	0920003
MAS-2.0	2000	245	265	100-300	148	288	120	1500	40	0920005
MAS-3.0	3000	234	318	100-300	117	310	154	1500	64	0920007

## EEFS electric trolley 2 speed



EEFS 1-axle trolleys can ideally be combined with any electric chain hoist.

### Properties

- Single axle design.
- 2 speeds 5/20 m/min.
- Anti-drop and tilting protection provides extra safety.
- Push-button box not included.

### Technical properties

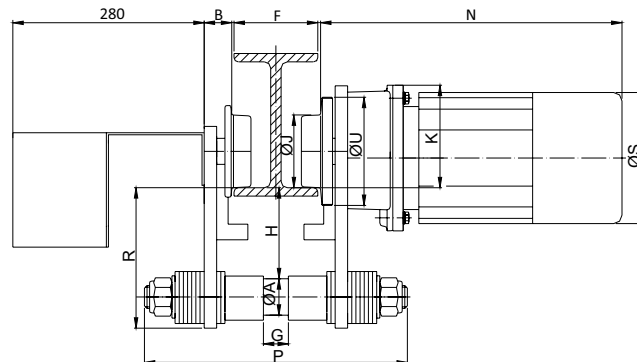
- Driving speed 5/20 m/min
- Operation voltage 400V
- Control voltage 24V
- Protection class IP54
- Duty cycle 120 sch/h 40%
- Isolation class F
- Motor power 0.04/0.18 kW

### IMPORTANT:

- Always specify flange width in mm.

### Norm:

- EN12100-1/2, EN13157, EN14492.2



Type	WLL (kg)	Flange width (mm)	A (mm)	B (mm)	F (mm)	G (mm)	H (mm)	J (mm)	K (mm)	N (mm)	R (mm)	S (mm)	U (mm)	Min. radius (mm)	Weight (kg)	ProductId
EEFS10	1000	66-300	28 / 32 / 35	26,5	66-300	24	71	70	122	356	109	140	104	1000	22	0821001
EEFS20	2000	66-300	35 / 40 / 45	26,5	66-300	24	87,5	70	122	356	135	140	104	1500	25	0821003
EEFS32	3200	82-300	45 / 50 / 55	28	82-300	32	93	103	122	356	156	140	141	2000	40	0821005

## HFN push trolley



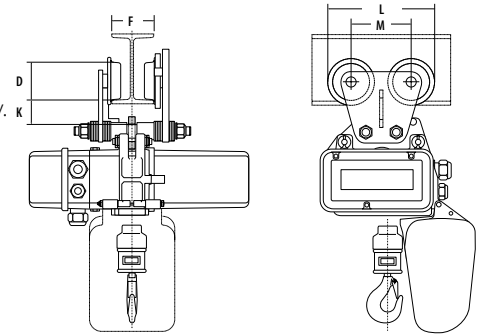
REMA HFN trolleys can only be assembled together with the REMA SR electric chain hoists.

### Properties

- Double axle design.
- Anti-drop and tilting protection provides extra safety.
- Equipped with steel machined wheels.
- Assembly and suspension plates not included.

### Norm:

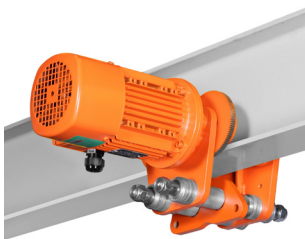
- EN12100-1/2, EN13157



Allways mention the right flange width in mm.

Type	WLL (kg)	D (mm)	F (mm)	K (mm)	L (mm)	M (mm)	Weight (kg)	ProductId
HFN500	500	70	50-300	33	200	112	8	0814001
HFN2000	2000	70	66-300	35	200	112	10	0814003
HFN3200	3200	103	82-300	35	288.5	152.5	22	0814005
HFN6300	6300	122	90-310	36	351	191	47	0814007

## EFS electric trolley



REMA EFS trolley can only be delivered in combination with REMA SR 400/24V electric chain hoist.

### Properties

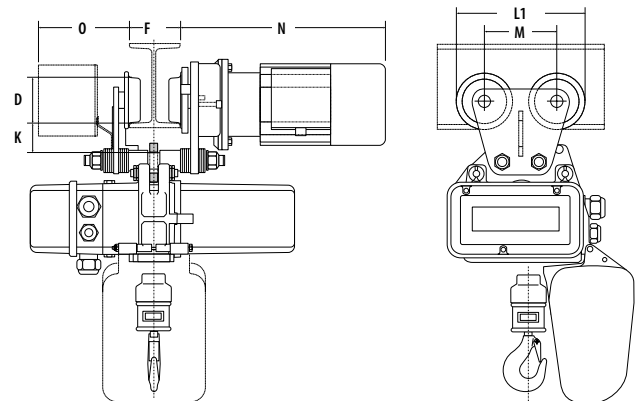
- 400 V, 3 phase, 50 Hz Double-pin design.
- Double axle design.
- 1 or 2 travel speeds.
- Anti-drop and tilting protection provides extra safety.
- 24 V control and pendant control not included.
- Assembly and suspension plates not included.

### Technical properties

- Operation voltage 400V
- Protection class IP54
- Isolation class F

### Norm:

- EN12100-1/2, EN13157, EN14492.2



Allways mention the right flange width in mm.

Type	WLL (kg)	Speed (m/min)	D (mm)	F (mm)	K (mm)	L1 (mm)	M (mm)	N (mm)	O (mm)	Min. radius (mm)	Motor (kW)	Weight (kg)	ProductId
EFS500-16	500	16	70	50-300	33	216	112	220	142	1000	0.12	17	0817001
EFS2000-16	2000	16	70	66-300	38	216	112	220	146	1500	0.12	17	0817005
EFS500-5/20	500	5/20	70	50-300	33	216	112	292	280	1000	0.04/0.18	19	0818001
EFS2000-5/20	2000	5/20	70	66-300	35	216	112	292	280	1500	0.04/0.18	18	0818005
EFS3200	3200	5/20	103	82-300	38	293.5	152.5	385	280	1500	0.04/0.18	34	0818007
EFS6300	6300	4/16	122	90-310	38	293.5	152.5	409	280	2000	0.06/0.25	63	0818009
EFS12500	12500	4/16	150	140-310	38	351	191	409	280	2500	0.12/0.55	150	0818011