

Fall arrest info	256
Personal safety harness sets	258
Harnesses	260
Lanyards	265
Fall arrestors	269
Extra safety tools	271



Introduction to personal fall protection

Harnesses

Application where there is risk of falling

Hip belts

Only use for positioning work, so not as fall protection.

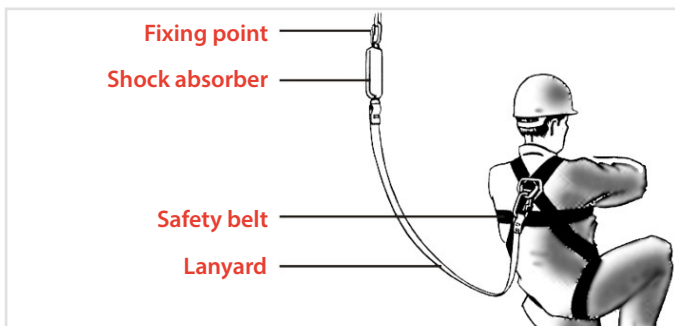
Important information

- Careless use may result in physical injury.
- Read the instructions supplied with your safety gear carefully before use.
- Check visually every time before use.
- For normal use, record these checks at least once a year on the registration card supplied.
- For intensive use, do this at least once every three months.
- Recommended service life of lines at most 10 years from manufacturing date depending on the usage frequency.
- Recommended service life of harnesses and equipment at most 10 years.
- Have fall arrest devices retested only by the manufacturer.
- Belts and lines must not be used again after a fall or other damage.
- The attachment eye on the back and attachment textile loops on the front are only intended for attachment of the safety line.
- Only use positioning eyes on front of (integrated) hip belt in situations where there is no risk of falling from height.

Technical information

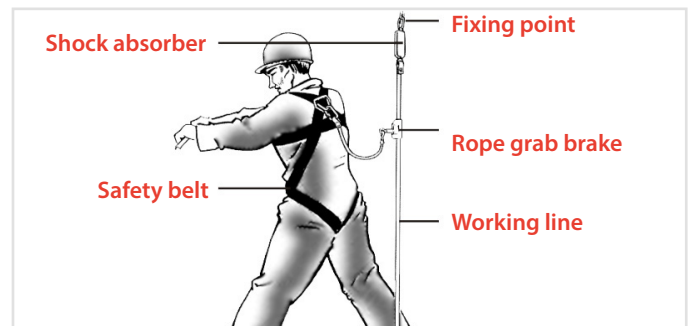
Features of hip belts and harnesses

- Universal sizes (except for hip belt and EXPERT and VOLTA harnesses).
- Ideal fit.
- No pressure points.
- Highly comfortable to wear.
- Standard strap width 45 mm.
- Colour: bright red/blue.
- Conformity declaration and CE marking supplied.
- User manual included.
- Registration card for periodic inspections.



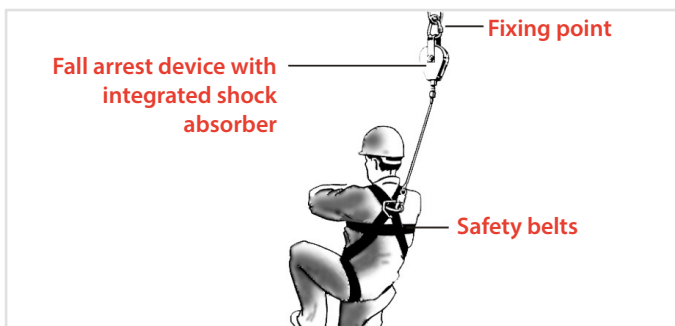
Harness with lanyard and shock absorber

Application with risk of falling
Maximum movement radius: less than 2 metres



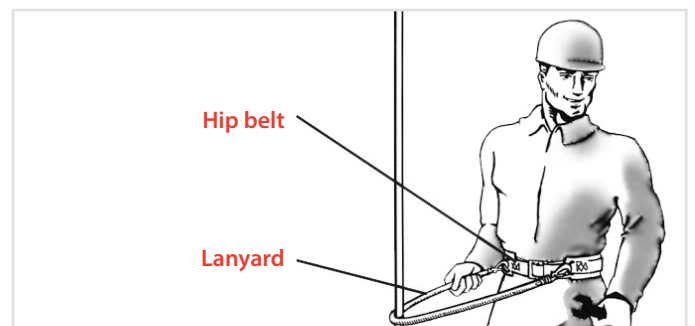
Harness with rope grab on working line

Application with risk of falling
Greater movement radius needed



Harness with fall arrest device

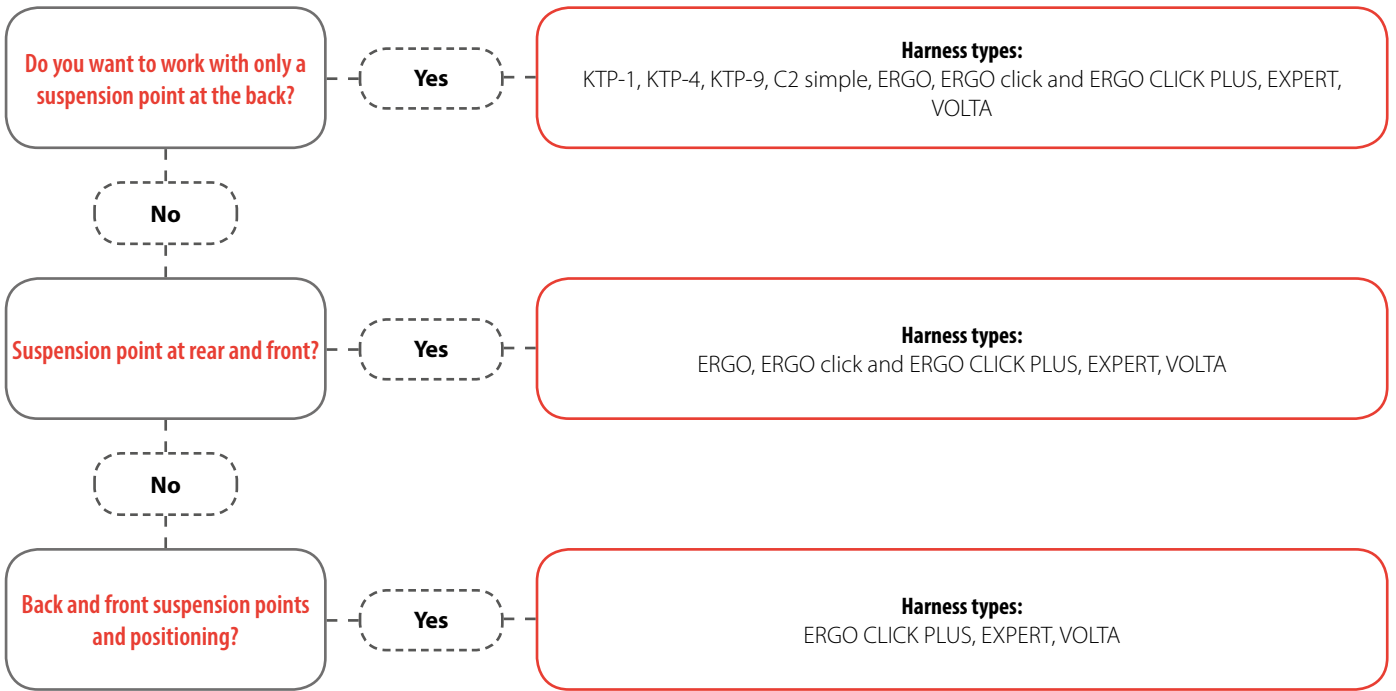
Application with risk of falling
Greater movement radius and freedom of movement needed



Hip belt with lanyard

Application with risk of falling during positioning work

Selection chart for fall protection harnesses



* **Positioning** = Working on a mast with the added possibility of putting a line round the mast and thus being able to use both hands for working. This is only allowed when there is no risk of falling or if the fall height is less than 50 cm.

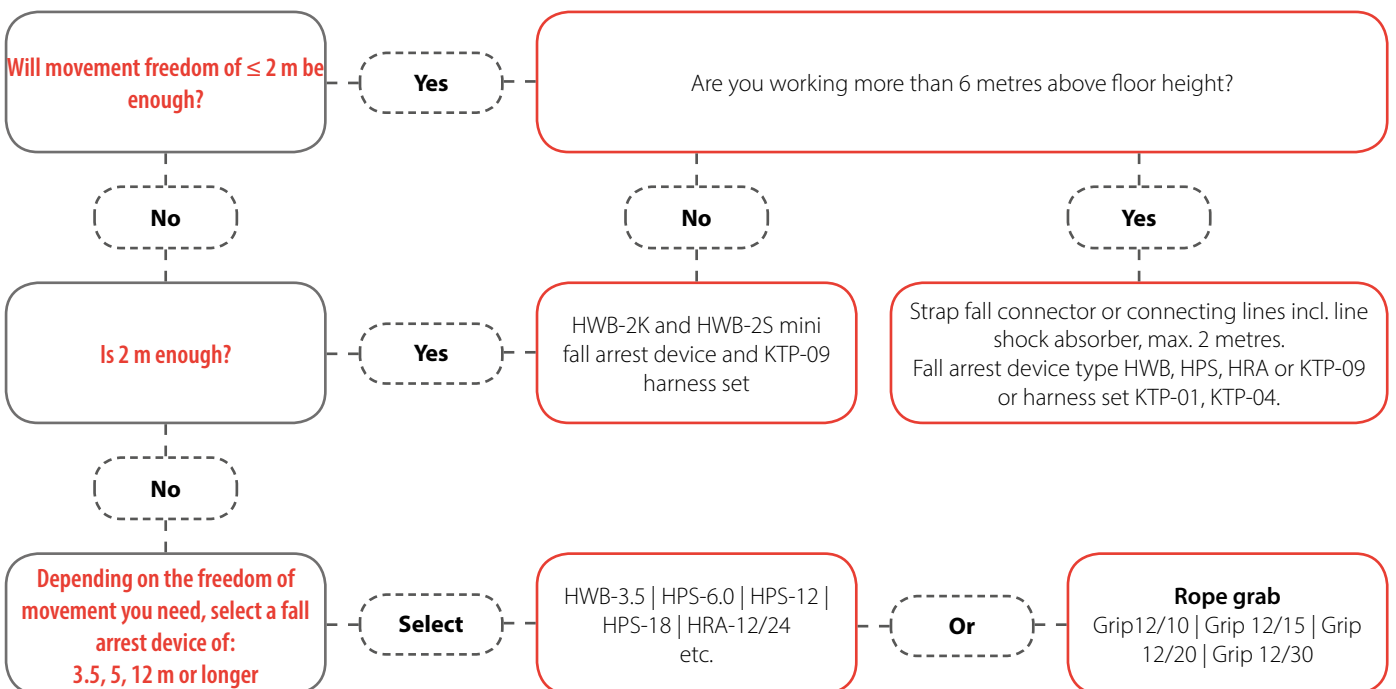
Important

Only use line shock absorber or strap connector at a minimum free fall distance of 6 metres measured from the attachment point.

Information

With rope grab, the end of the working line must be tied on securely or be provided with a weight; this assists its operation.

Selection chart for fall arrest devices and connection lines



Harness ERGO, Grip 12 and 15 meter lanyard in backpack


Consisting of:

- Harness ERGO (Article-No 1730032)
- GRIP-12 retaining clamp with 15 meter rope (Article-No 1761115)
- Backpack (Article-No 1731643)

Norm:

- EN 361, EN 355, EN 353-2, EN 360

Type
ProductId

COMPL. ERGO/GRIP12 IN BACKPACK-15MTR

1731210

Harness C2 Simple, EH20/OV with small hook and backpack


Consisting of:

- Harness C2 SIMPLE (Article-No 1730021)
- Fall demper (Article-No 1730250)
- Backpack (Article-No 1731643)

Norm:

- EN 361, EN 355, EN 353-2, EN 360

Type
ProductId

COMPL. C2 Simple + EH20/OV + BACKPACK

1731222

Harness C2 Simple, HWB-3.5 fall arrest in steel case


Consisting of:

- Harness C2 SIMPLE (Article-No 1730021)
- Fall arrester HWB-3.5 (Article-No 1790101)
- Steel suitcase (Article-No 1731608)

Norm:

- EN 361, EN 355, EN 353-2, EN 360

Type
ProductId

COMPL. C2 Simple + HWB-3,5 in steel case

1731230

Harness ERGO, HPS-12 fall arrest in steel case


Consisting of:

- Harness ERGO (Article-No 1730032)
- Fall arrester HPS-12 (Article-No 1790205)
- Steel suitcase (Article-No 1731608)

Norm:

- EN 361, EN 355, EN 353-2, EN 360

Type
ProductId

COMPL. Fall arrest set in steel case

1731240

REMA KTP-01 harness 3 in 1



The Rema KTP-IZI is a carrier bag, harness and connecting rope integrated in one unit. Open the bag and turn it inside out; your harness will appear and you can step into it, using the bag as rear and with the attached line within reach at the front.

Properties

- Carrier bag.
- Harness with connecting band and integrated fall damper band.

Norm:

- EN 361, EN 355.

Type	Length max. (m)	ProductId
KTP-01	6	1740001

REMA KTP-04 harness 3 in 1



The Rema KTP-IZI is a carrier bag, harness and connecting rope integrated in one unit. Open the bag and turn it inside out; your harness will appear and you can step into it, using the bag as rear and with the attached line within reach at the front.

Properties

- Carrier bag.
- Harness with elastic lanyard with integrated fall damper provided with scaffolding hook.

Norm:

- EN 361, EN 360.

Type	Length max. (m)	ProductId
KTP-04	2	1740004

REMA KTP-09 harness 3 in 1



The Rema KTP-IZI is a carrier bag, harness and connecting rope integrated in one unit. Open the bag and turn it inside out; your harness will appear and you can step into it, using the bag as rear and with the attached line within reach at the front.

Properties

- Carrier bag.
- Harness with HWB-2,0 mini fall arrest device provided with scaffolding hook.

Norm:

- EN 361, EN 360, EN 363

Type	Length max. (m)	ProductId
KTP-09	2	1740009

Harness C2 SIMPLE (EN-361)



Properties:

- 1 suspension eye at the backside.
- Webbing width; 45 mm.
- Adjustable and easily-opening thigh loops.
- Max. load 100 kg.

Application

- This harness is easy to apply to roofers, carpenters, plumbers, steel construction workers.

Norm:

- EN 361

Type	Size	ProductId
PERFEKT ECO	Universal	1730021

Harness ERGO (EN 361)



Properties

- 2 polyester catching eyes at the front always use together.
- 1 steel D-ring at the rear.
- Webbing width 45 mm.
- Infinitely adjustable and equipped with handy plastic snap buckle.
- Adjustable and easy to open leg loops.
- Maximum load harness 130 kg.
- Universal.

Application

- Roofers, carpenters, plumbers, steel construction workers.

Norm:

- EN 361

Type	Size	ProductId
PSA Ergo SSS	Universal	1730032

Harness ERGO Click (EN 361)



Properties

- Quick to put on as a jacket.
- 2 polyester catching eyes at the front always use together.
- 1 D-ring collection eye at the rear.
- Webbing width 45 mm.
- Infinitely adjustable and equipped with handy plastic snap buckle.
- Adjustable leg loops.
- Leg loops with steel click system, for easy opening.
- Maximum load harness 130 kg.
- Universal.

Application

- For roofers, carpenters, plumbers, steel construction workers.

Norm:

- EN 361

Type	Size	ProductId
PSA Ergo click SSS	Universal	1730090

Harness ERGO Click plus (EN 361)



Properties

- Quick to put on as a jacket.
- 2 polyester catching eyes at the front always use together.
- 1 steel D-ring collection eye at the rear.
- Integrated hip belt with 2 positioning eyes.
- Infinitely adjustable by means of clamp buckles.
- Hip belt is upholstered for optimal support.
- Continuous supporting chest strap.
- Easy to open leg loops by means of quick click system.
- Good wearing comfort.
- Webbing width 45 mm.
- Maximum load harness 130 kg.
- Universal.

Application

- In activities where the presence of double connecting means is an advantage, such as in steel construction and industry.

Norm:

- EN 358, EN 361

Type	Size	ProductId
PSA Ergo click plus SSS	Universal	1730100

Harness EXPERT (EN 361 / EN 813)



Properties

- 1 polyester collection eye at the front.
- 1 Steel D-ring collection eye at the rear.
- 2 aluminum positioning eyes on the integrated lap belt.
- Screw carabiner on the front to open and close the harness.
- 1 steel D-ring position eye on the front seat belt.
- Infinitely adjustable by means of quick adjustment buckles.
- Adjustable and easy to open leg loops.
- Hip belt and leg loops are lined for optimal support.
- Tool rings on the integrated lap belt, maximum load 10 kg per ring.
- Maximum load harness 130 kg.
- Webbing width 45 mm.

Application

- With combined standing and hanging work such as when working on transmitting and high voltage masts.

Norm:

- EN-361, EN 813

Type	Leg size (cm)	Waist (cm)	ProductId
EXPERT 1	52-78	80-140	1730070
EXPERT 2	52-83	80-150	1730071

Harness VOLTA (EN 361 / EN 813)



Properties

- 1 polyester collection eye at the front.
- 1 Steel D-ring collection eye at the rear.
- 2 aluminum positioning eyes on the integrated lap belt.
- Screw carabiner on the front to open and close the harness.
- 1 steel D-ring position eye on the front seat belt.
- Infinitely adjustable by means of quick adjustment buckles.
- Adjustable and easy to open leg loops.
- Hip belt and leg loops are lined for optimal support.
- Tools eyes on the integrated lap belt, maximum load 10 kg per eye.
- 2 plastic eyes at the rear hip belt for materials, maximum load 2 kg.
- Maximum load harness 130 kg.
- Webbing width 45 mm.

Application

- For work on high voltage masts.

Norm:

- EN 358, EN 361, EN 813

Type	Leg size (cm)	Waist (cm)	ProductId
VOLTA 1	52-78	80-140	1730080
VOLTA 2	52-88	80-150	1730081

BELT CLICK hip belt for positioning (EN 358)



Properties

- 2 positioning eyes.
- Back support.
- Infinitely adjustable by means of ERGO click system.
- Band width 45 mm.
- Maximum load belt 130 kg.

Application

- Only with standing positioning work.

IMPORTANT!

- Not suitable as a catching belt

Norm:

- EN 358.

Type	Waist (cm)	ProductId
BELT CLICK 1	85 - 110	1730006
BELT CLICK 2	110 - 140	1730007

GRANIT Light retaining straps (EN-361/EN-1497)



Properties

- 2 aluminum rings on the front, always use together.
- Integrated seating area.
- Infinitely adjustable by means of clamp buckles.
- The belt is closed automatically (excl.) By hooking a carabiner into 2 attachment eyes.
- Webbing width 45 mm.
- Maximum load harness 130kg.
- Universal.

Application

- For work that requires a longer time in the belt.
- In silos, crane cabins, salvage work at height, etc.

Norm:

- EN 361, EN 1497.

Type	Size	ProductId
PERFEKT PROFI 10	Universal	1730012

Salvage belt (EN 1498)



Suitable for rescuing people.

Properties

- 1 central suspension point at the front 45 mm.
- Webbing material combined with tear-resistant polyester fabric.
- Various storage options, depending on body size.
- 2 rubber shoulder straps.
- Maximum load belt 150 kg.
- Universal.

Application

- For salvaging people.

Norm:

- EN 1498 Klasse B.

Type

Salvage belt

Size

Universal

ProductId

1730061

FallSorb i-bungy with small hook EH21/Croc25



Properties

- Total length 1,85 meter.
- Sling width 25 mm.
- 1 small hook 25 mm and 1 small hook 20 mm
- Maximum load 50 til 140 kg

Norm:

- EN 355, CNB/P/11.062, CNB/P/11.074

Type	Length (m)	ProductId
FallSorb i-bungy+EH21/Croc25	1,75	1730250

FallSorb i-bungy with scaffold hook



Properties

- Total length 1,85 meter.
- Sling width 25 mm.
- 1 small hook 25 mm and 1 scaffold hook 60 mm.
- Maximum load 50 til 140 kg.

Norm:

- EN 355, CNB/P/11.062, CNB/P/11.074

Type	Length (m)	ProductId
FallSorb i-bungy+EH60/Croc25	1,85	1730253

FallSorb y-bungy with 2 scaffold hooks



Properties

- Total length 1,85 meter.
- Sling width 25 mm.
- 1 small hook 25 mm and 2 scaffold hooks 60 mm.
- Maximum load 50 til 140 kg.

Norm:

- EN 355, CNB/P/11.062, CNB/P/11.074

Type	Length (m)	ProductId
FallSorb i-bungy+2 x EH60/Croc25	1,85	1730255

Webbing lanyard



Properties

- Sling width 25 mm with 1 big eye and 1 small eye.
- Can be use in combination with 1731646/652 carabiner.

Norm:

- EN 354.

Type	Length (m)	ProductId
VM BND 26/0.5	0,5	1730220
VM BND 26/1.0	1	1730222
VM BND 26/1.5	1,5	1730223
VM BND 26/1.8	1,8	1730224

Endless sling lanyard



Properties

- Sling width 26 mm endless.
- Can be use in combination with 1731646/652 carabiner.

Norm:

- EN 354.

Type	Length (m)	ProductId
BS 100	1	1730201
BS 150	1,5	1730202
BS 200	2	1730203

Fall damper strap



When damping, this band decreases the impact force to be born by the human body below 600 kg. Provided with a safety connecting triangle at one end. Compact creased and sewn polyester strap strongly packed in a PVC hose. On the influence of the sudden impact force risen during a possible fall, the seam will be undone from stitch to stitch creating a retarding effect.

Tested in compliance with EN 355.

Technical specifications

- Length max 1.5 m .
- Maximum collection distance 2.75 m.
- Length of person including shift of the harness 2.5 m.

IMPORTANT

- Free fall height must be at least 6.75 meters in combination with connecting device.

Type	Length (m)	ProductId
MAS BFD2	0,5	1730191

Safety retaining rope



Properties

- Article-No. 1730140 has 1 carabiner on one side and a loop on the other side.
- Article-No. 1730121 has 1 large and 1 small hook
- Article-No. 1730180 is adjustable by the buckle between 1.4 and 2.0 m.

Norm:

- EN 354.

Type	Length (m)	ProductId
VM-150/14	1,5	1730140
VM-200/14	1,4 - 2	1730180
KM-120/14 LM + FS90	1,2	1730121

GRIP 12 - synchronized retaining clamp with integrated shock absorber



Synchronized retaining clamp with integrated shock absorber attached inseparably to the work rope and serves as a fall stop. It displaces up and down freely except that it will block during a possible fall. Standard supply consists of: Model GRIP 12 complete with integrated shock absorber, supporting rope of 40 cm, carbine with hook and a work rope having a carbiner hook at one end and a knot at the other one.

Application

- In building industry by roofers, carpenters, façade plating etc.

Norm:

- EN 353-2.

Type	Length (m)	ProductId
GRIP 12/10	10	1761110
GRIP 12/15	15	1761115
GRIP 12/20	20	1761120
GRIP 12/30	30	1761130

12 mm Safety working rope TUTOR



Properties

- Standard delivery: at one end with a carabiner, at the other end a loop.
- TUTOR working line is recognizable by the yellow diagonal line.
- Core mantle line with low elongation.

Norm:

- EN 1891



Type	Diameter (mm)	Length (m)	ProductId
WLT-10M	12	10	1761141
WLT-15M	12	15	1761142
WLT-20M	12	20	1761143
WLT-30M	12	30	1761145
WLT-40M	12	40	1761144

12 mm Safety working rope DYNAFLEX



Properties

- Standard delivery: at one end with a carabiner, at the other end a loop.
- DYNAFLEX working line is recognizable by the Blue diagonal line.

Norm:

- EN 892



Type	Diameter (mm)	Length (m)	ProductId
WLD-10M	12	10	1761151
WLD-15M	12	15	1761152
WLD-20M	12	20	1761153
WLD-30M	12	30	1761154
WLD-40M	12	40	1761155

HWB mini fall arrester



Properties

- Lightweight aluminium housing with a webbing lifeline
- Swivel eye attachment point
- Sewn in load indicator on lifeline
- Additional testing against falls over edges
- Aluminium double action hook on end of lifeline to EN362
- Block can be attached to an anchorage point or safety harness

Norm:

- EN 1891

Type	Length (m)	Weight (kg)	ProductId
HWB - 2K	2	1.00	1790103
HWB - 2S	2	1.45	1790105
HWB - 3.5	3,5	1.60	1790101

HPS fall arrester



Properties

- Plastic housing with a steel cable lifeline
- Fixed handle anchor attachment point
- Sewn in load indicator on lifeline
- Additional testing against falls over edges
- Approved for both vertical and horizontal work
- Aluminium double action hook on end of lifeline to EN362

Norm:

- EN 1891

Type	Length (m)	Weight (kg)	ProductId
HPS - 6.0	6	3.0	1790203
HPS -12.0	12	4.6	1790205
HPS -18.0	18	6,7	1790207

ACB 1.8 fall arrester for working platforms



The ACB Device, designed for fall protection in mobile elevated working platforms is a milestone in the area of personal protection against falls. Tested and certified according to the requirements of EN 360. However, in addition to this standard, this device has been tested and certified for protection in mobile elevated working platforms to a German standard.

Properties

- Lightweight aluminium housing with a webbing lifeline
- Swivel eye attachment point
- Sewn in load indicator on lifeline
- Additional testing against falls over double edges, giving very low arrest forces
- Designed for MEWP use
- Aluminium double action hook on end of lifeline to EN362
- Block can be attached to anchorage point or safety harness

Norm:

- EN 1891

Type	Length (m)	Weight (kg)	ProductId
ACB-1.8	1.8	0,96	1790107

HRA Fall arrester with rescue winch



In the event of a possible fall, the person can be quickly and safely secured by means of the rescue winch on the fall arrest device.

Properties

- Aluminium housing, with a galvanised steel cable lifeline
- With release pin and two-way winding handle, to engage rescue/recovery mode
- Fixed handle anchor attachment point
- Attachment/connection handle or can be fitted to a davit or tripod via a bracket
- Aluminium double action hook on end of lifeline to EN362.

Type	Length (m)	Weight (kg)	ProductId
HRA-12	12	7.0	1790301
HRA -24.0	24	16.0	1790307

Aluminium tripod (excl.fall stop arrester and winch)



This aluminium tripod is an ideal way of suspension for working in silos, tanks, ditches. When combined with a fall stop apparatus fitted with a winch, it allows a controlled lowering of persons or, in an emergency, their quick pulling-up.

Properties

- Adjustable legs to eliminate ground unevenness.
- Capacity range: max 2 persons..

Application

- For work in silos, reservoirs, sewer pits, etc.

Option

- 1790500 Winch 250 kg.
- 1790511 Mounting plate winch.
- HRA Fall arrester with rescue winch.

Type	WLL (kg)	Spread position (mm)	Height (mm)	Weight (kg)	ProductId
IK2 / 1000 Alu	250	2400	2500	19.0	1790401

Rope ladder



Properties

- Consisting of 12 mm core jacket line.
- The ends are provide with plastic loops.

Type	Length (m)	ProductId
12MM-5M	5	1732310
12MM-10M	10	1732311
12MM-20M	20	1732312

End fitting



1731646



1731652



1731585



1731584

Type

ProductId

O-carabiner (20 mm)	1731646
HMS SL Carabiner (23 mm)	1731652
EH-21 Carabiner (21 mm)	1731585
EH-60 Carabiner (60 mm)	1731584

Storage



Type

Dimensions
(mm)

ProductId

Back pack small		1731643
PVC bag with Sholder belt 25L	240 x 600	1731645
Steel case	390 x 270 x 180	1731608

EAP Trolley

The EAP trolley is used as a mobile stop point for fall protection systems. the trolley can be mounted on various I-profiles.



Properties

- Rack and pinion made of aluminum.
- Suspension eye is made of high-quality steel alloy.
- Wheels are equipped with ball bearings.
- Adjustable in various widths.
- Maximum load 140 kg
- EN 795-B

Type

Opening
(mm)Weight
(kg)

ProductId

EAP TROLLEY	63.5-305	3.00	1731801
-------------	----------	------	---------

EAP Beam clamp

The EAP clamp is used as a point of contact for fall protection systems. the clamp can be mounted on various I-profiles.



Properties

- Rack and pinion made of aluminum.
- Suspension eye is made of high-quality steel alloy.
- Adjustable in various widths.
- Maximum load 140 kg
- EN 795-B

Type

Opening
(mm)Weight
(kg)

ProductId

EAP CLAMP	63.5-305	2.54	1731803
-----------	----------	------	---------

