



REMA
HOLLAND 30

Workshop cranes

218

Hydraulik fork lift jack

220

ROOF CRANE
CE
Model No. 3000 kg
Capacity 3000 kg
Max. height 10.00 m
Max. reach 10.00 m
Max. width 10.00 m
Max. weight 10.00 kg
Date of issue 10/2010
Date of revision 10/2010

GWK mobile workshop cranes



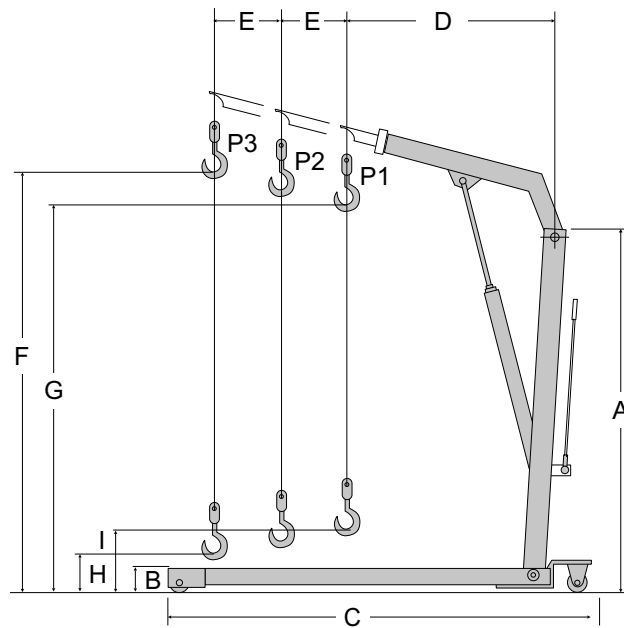
Robust construction, easy functioning. Specially for intensive working environments.

Properties

- Collapsible easy to transport.
- Robust construction.
- Hard chromed cylinder.
- Braked steering wheels can be rotated 360°.
- Rotating load hook (not under load).
- Lever adjustable in 3 positions.
- 125% proofed.
- Safety valve against overload.
- GWK-1000 has extra low legs.

Norm:

- EN12100-1/2, EN14985



Type	WLL P1 (Kg)	WLL P2 (Kg)	WLL P3 (Kg)	Width (mm)	Weight (kg)	ProductId
GWK-500	500	425	350	970	75	4220015
GWK-1000	1000	800	700	1120	115	4220017
GWK-2000	2000	1700	1500	1165	165	4220019

Type	A (mm)	B (mm)	C (mm)	D (mm)	E (mm)	F (mm)	G (mm)	H (mm)	I (mm)
GWK-500	1410	165	1510	895	102	2120	1960	130	340
GWK-1000	1675	90	1630	1230	150	2445	2330	-	245
GWK-2000	1690	205	1900	1290	150	2705	2505	-	230

GWKE euro shop cranes

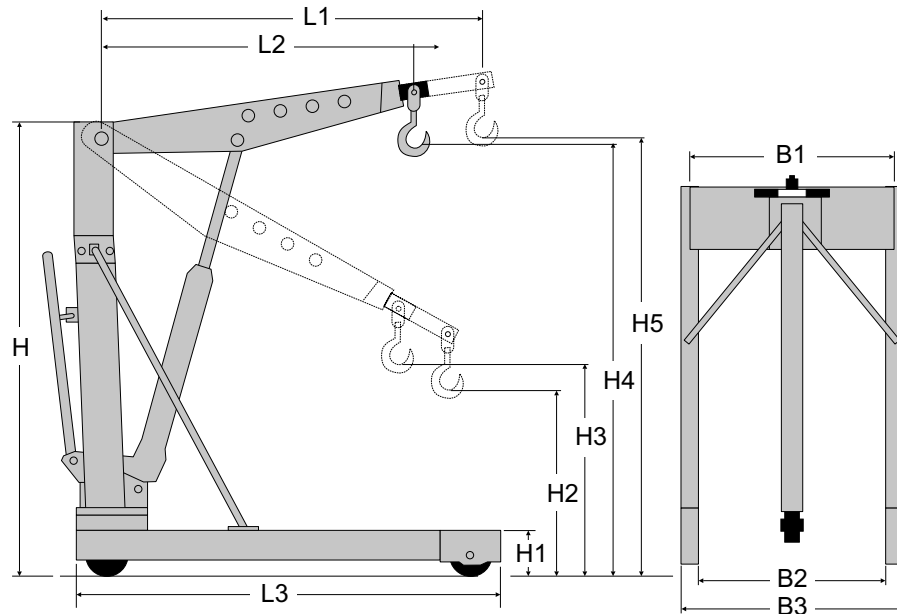


Properties

- Suitable for euro pallets 800x1200mm.
- Easy operation.
- Robust construction.
- Hard chromed cylinder.
- Braked steering wheels are rotatable through 360°.
- Rotating load hook (not under load).
- Jack adjustable in 4 positions.
- 125% proofed.
- Safety valve against overload.

Norm:

- EN12100-1/2, EN14985



Type	WLL P1 (Kg)	WLL P2 (Kg)	WLL P3 (Kg)	WLL P4 (Kg)	Weight (kg)	ProductId
GWKE-500	500	450	400	350	81	4220011
GWKE-1000	1000	900	800	700	103	4220013

Type	B1 (mm)	B2 (mm)	B3 (mm)	H (mm)	H1 (mm)	H2 (mm)	H3 (mm)	H4 (mm)	H5 (mm)	L1 (mm)	L2 (mm)	L3 (mm)
GWKE-500	925	840	1000	1595	155	470	705	2225	2475	1360	1060	1395
GWKE-1000	925	840	1000	1595	155	470	705	2225	2475	1360	1060	1395

GHC hydraulik fork lift jack



Properties

- Load capacity on pawl 4000 kg
- Load capacity on head 5000 kg
- Double lifting heights
- Overload prevention
- 2 lifting speeds normal or fast; with or without load.

Norm:

- EN12100

Type	WLL P1 (Kg)	Dim. L x W x H (Kg)	Construction height (Kg)	Lifting height (mm)	Weight (kg)	ProductId
GHC-5	5000	680 x 210 x 415	65-425	414-724	47	4260030

GHB trestles

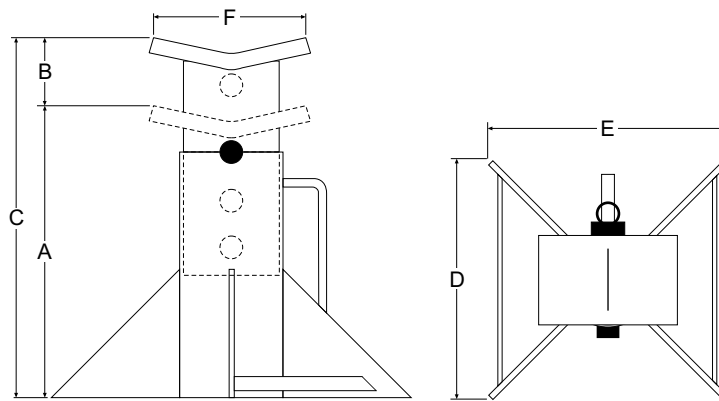


Properties

- Ideally combines with a hydraulic scissors jack
- Robust construction
- 3 height adjustments
- Available exclusively in pairs

Norm:

- EN12100



Type	WLL P1 (Kg)	A (Kg)	B (mm)	C (mm)	D (mm)	E (mm)	F (mm)	Weight (kg)	ProductId
GHB-6	12000/2	242	55	425	220	220	110	15	4261030