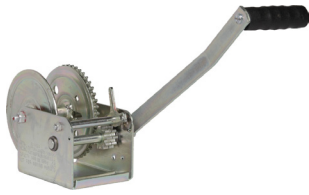


Hand winches	192
Gear- and worm gear winches	196
Electric worm gear winches	200
230/400VAC lifting-/pulling winch	202



REMA
 Typ: WW-0,25 OR2/D
 Year/Baujahr: 2010
 Serial No /Serien Nr.: 601 00564 / 003
 Capacity/Zugkraft: 1 - Layer/ Seillage
 min. 15,9 KN
 Breaking force cable /
 Kraft Seil: 5 mm
 CE
 250 Kg
 95 Kg

DL winches (NOT FOR LIFTING)



DL zinc winch only for pulling.

Properties

- Demountable crank (DL-2500 en DL-3500).
- Zinc-plated housing with zinc-plated drum (Model DL-3500 is fitted with a black drum).
- Hardened steel gears.
- The DL-900A, DL-1000A and DL-1402A versions have a pawl that works in one direction with free-wheel mode.
- The DL-2500AB and DL-3500B versions have a double speed and are also equipped with a manually operated brake.

Standard delivery

- Without steel wire rope.

Option

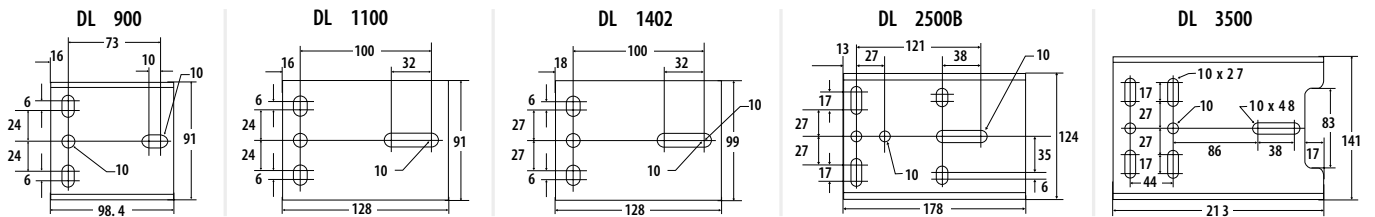
- Steel wire rope with safety hook.

IMPORTANT:

- Not suitable for lifting.

Norm:

- EN12100-1/2, EN13157



Type	S.W.L. (kg)	Maximum reel capacity (m)	Cable diameter (mm)	Lifting height per stroke (m)	Drum diameter (mm)	Drum width (mm)	Gear ratio	Crank length (mm)	Crank force (kg)	Base size (mm)	Weight (kg)	ProductId
DL-900A	408	10.9	5	19	16	50	3.2:1	178	7	99 x 91	2	2117001
DL-1100A	499	22.2	5	18	22	53	3.7:1	178	9	128 x 91	3	2117003
DL-1402A	635	14.2	6	16	22	50	4.4:1	241	8	128 x 99	4	2117005
DL-2500AB	1134	23.0	8	16	28	60	17.3:1 - 5.4:1	241	5	178 x 124	7	2117007
DL-3500B	1589	12.3	10	16	33	70	12:1 - 6:1	241	13	213 x 141	10	2117009



1

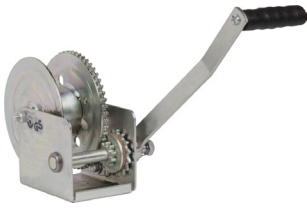


2



3

DLB brake winch



DLB zinc winch with automatic brake.

Properties

- Zinc-plated housing (DL2500G has a black drum).
- Fitted with automatic load pressure brakes.
- For extra safety, they are fitted with locking pawls.

Standard delivery

- Without steel wire rope

Options

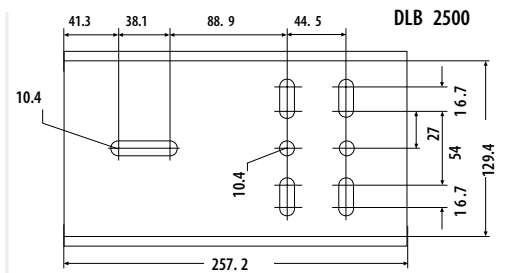
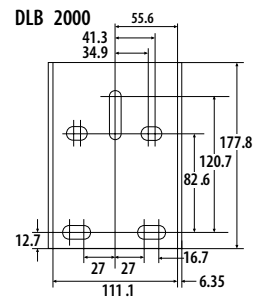
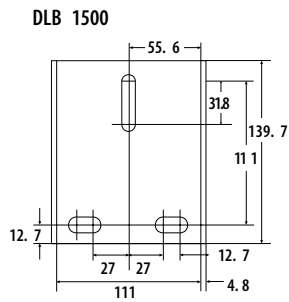
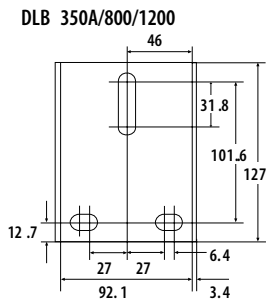
- Steel wire rope according DIN 3060 with safety hook.
- Sling belt according DIN 3060 with safety hook.

Important

- For lifting, select another wire rope diameter, taking tensile strength into consideration.
- Minimum load required for winch to operate properly.

Norm:

- EN12100-1/2, EN13157



Type	S.W.L. (kg)	Minimum load (kg)	Maximum reel capacity (m)	Cable diameter (mm)	Lifting height per stroke (mm)	Drum diameter (mm)	Drum width (mm)	Gear ratio	Crank length (mm)	Crank force (kg)	Base size (cm)	Weight (kg)	ProductId
DLB-350A	159	23	25	3	22.5	26	52	3.2:1	178	10	13 x 10	3	2117010
DLB-800AG	360	23	23	4	36	48	53	4.4:1	178	12	13 x 10	3	2117011
DLB-1200AG	545	23	19.7	5	39	64	51	5.4:1	238	19	13 x 10	4	2117013
DLB-1500AG	680	34	15.1	6	40	64	62	5.4:1	305	18	14 x 12	5	2117015
DLB-2000AG	905	89	8.9	7	30	64	54	17.3:1	238	8	18 x 12	7	2117016
DLB-2500G	1135	136	7.4	8	23	79	66	12.0:1	244	13	26 x 14	12	2117017

Winch cable set according to DIN 3060.



Winch cable set according to DIN 3060 with thimble and hook with safety latch.

Option

- Longer cable on request.

Type	S.W.L. (kg)	Length (m)	Tensile strength (N/ mm ²)	Cable diameter (mm)	Weight (kg)	ProductId
4MM-20M-DIN3060	210	20	1770	4	1.55	2221004
5MM-15M-DIN3060	320	15	1770	5	1.75	2221005
6MM-15M-DIN3060	470	15	1770	6	2.50	2221006
7MM-10M-DIN3060	640	10	1770	7	2.30	2221007
8MM-8M-DIN3060	840	8	1770	8	2.45	2221008
10MM-10M-DIN3060	1060	10	1770	10	3.5	2221010

Winch sling belt set



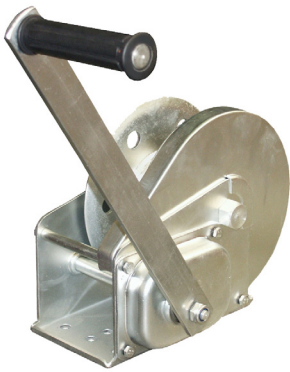
Sling belt set according to EN 1492-1 loop and with hook with safety hook.

IMPORTANT:

- Not suitable for lifting.

Type	For winch typ	Weight (kg)	ProductId
50mm x 4.5m	DL1100/DLB800/DL1402	0.60	2222001
50mm x 7.5m	DL1100/DL1402	0.75	2222003

TWZ and TWR manual winches



The compact REMA TWZ and TWR winches are self locking; they are manufactured from pressed steel plate to ensure durable strength. These winches are utilized in many areas such as: food industry, maritime sector, poultry breeding, trailer manufacturing etc.

TWZ: Galvanized.
TWR: Stainless steel. (AISI 304)

Properties

- Automatic load pressure brake that can hold loads at any desired height.
- Double locking pawl system for extra safety (82 and 12 kg).
- Drive and brake in an enclosed housing.
- Demountable crank.
- Simple wire rope equipment.

Standard delivery

- Without steel wire rope

Norm:

- EN12100-1/2, EN13157

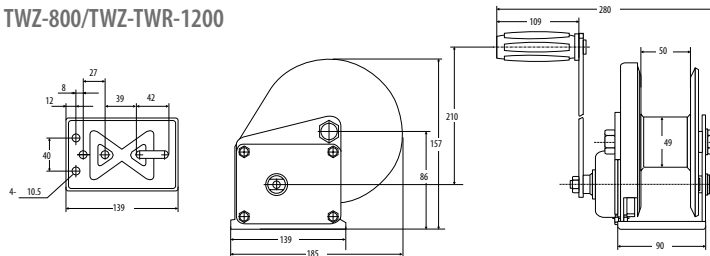
IMPORTANT:

For lifting, select another wire rope diameter, taking tensile strength into consideration.

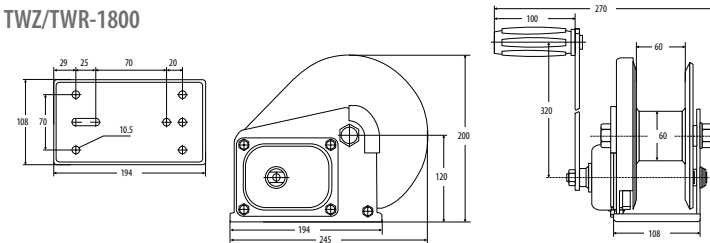
Option

- Steel wire rope with hook and safety latch.

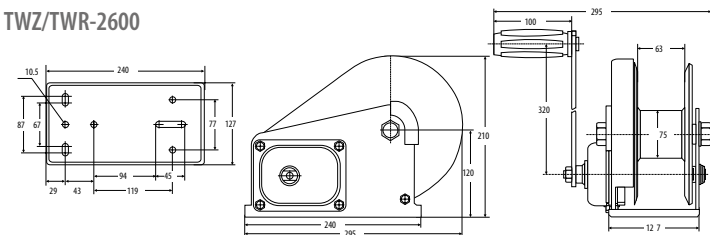
TWZ-800/TWZ-TWR-1200



TWZ/TWR-1800



TWZ/TWR-2600



Type	WLL pulling (kg)	WLL lifting (kg)	Minimum load (kg)	Maximum reel capacity (m)	Cable diameter (mm)	Lifting height per stroke (mm)	Drum diameter (mm)	Drum width (mm)	Gear ratio	Crank length (mm)	Crank force (kg)	Weight (kg)	ProductId
TWZ-800	360	180	10	36	4	34	48	50	4.1 : 1	210	14.5	3	2111001
TWZ-1200	550	275	10	23	5	42	48	50	4.1 : 1	210	15	3,3	2111003
TWZ-1800	820	410	15	20	7	49	60	60	5.0 : 1	320	22	8	2111005
TWZ-2600	1180	590	20	18	8	28	75	63	10.0 : 1	320	19	10,3	2111007
TWR-1200	440	220	10	23	5	42	48	50	4.1 : 1	210	15	3,3	2112003
TWR-1800	660	330	15	20	6	49	60	60	5.0 : 1	320	22	8	2112005
TWR-2600	960	480	20	18	8	28	75	63	10.0 : 1	320	19	10,3	2112007

TL Gear winch



Properties

- Complies with EN13157.
- Load pressure brake.
- Adjustable crank length; backwind-free.
- The drums and the shaft supported by needle bearings.
- Paint finish and enamel varnish are standard.
- Capacity min. 2%

Standard delivery:

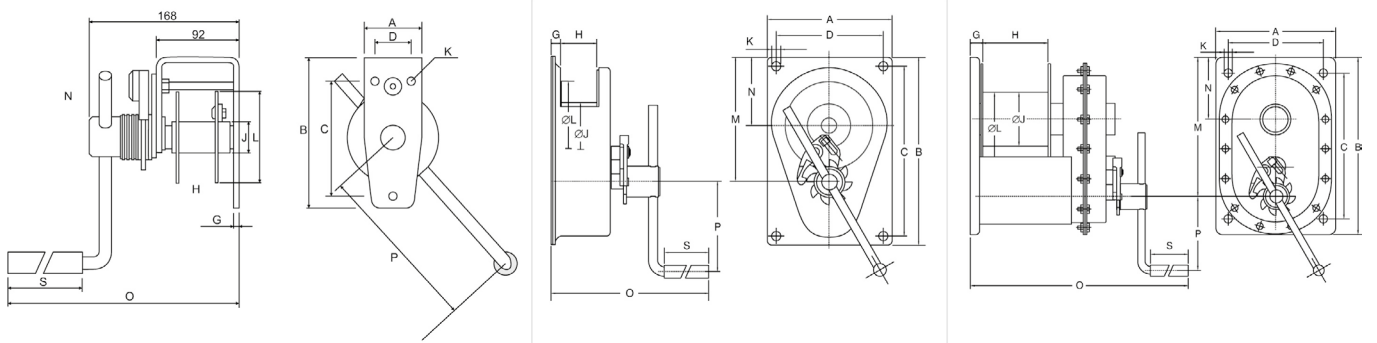
- Without steel wire rope.

Option:

- Wire rope on request with hook and safety latch.

Norm:

- EN12100-1/2, EN13157



Type	Lifting capacity 1st layer (kg)	Lifting capacity last layer (kg)	Cable max. (m)	Cable diameter (mm)	Lifting height per stroke (mm)	Crank force (kg)	Weight (kg)	ProductId
TL-0.150	150	68	13	4	122	11	4	2015008
TL-0.3	300	120	25	5	21	7	10	2015009
TL-0.6	600	323	12	6	28	10	11	2015012
TL-1.0	1000	684	28	10	21	15	28	2015013
TL-1.5	1500	844	21	14	14	12	27,5	2015014

Type	A (mm)	B (mm)	C (mm)	D (mm)	G (mm)	H (mm)	J (mm)	K (mm)	L (mm)	M (mm)	N (mm)	O (mm)	P (mm)	S (mm)
TL-0.150	65	168	128	40	6	40,5	35	9 (3x)	102	-	89	303	280	128,5
TL-0.3	200	300	268	168	20	55	70	12 (4x)	145	198	108	318	280	128,5
TL-0.6	200	300	268	168	20	55	60	12 (4x)	145	203	110	318	325	128,5
TL-1.0	250	250	212	170	6,7	113	102	16,5 (4x)	212	266	118	483,5	350	132,2
TL-1.5	250	250	212	170	22,5	113	102	17 (4x)	212	266	118	483,5	350	128,5

RGL gear winches



Properties

- Construction according to DIN 152.
- Braked design with double pawl system.
- Crank gradually adjustable in length.
- Drum and shafts provided with bearings.
- Freewheel, through protected pawl system.
- Powdercoating RAL 24.

Standard delivery

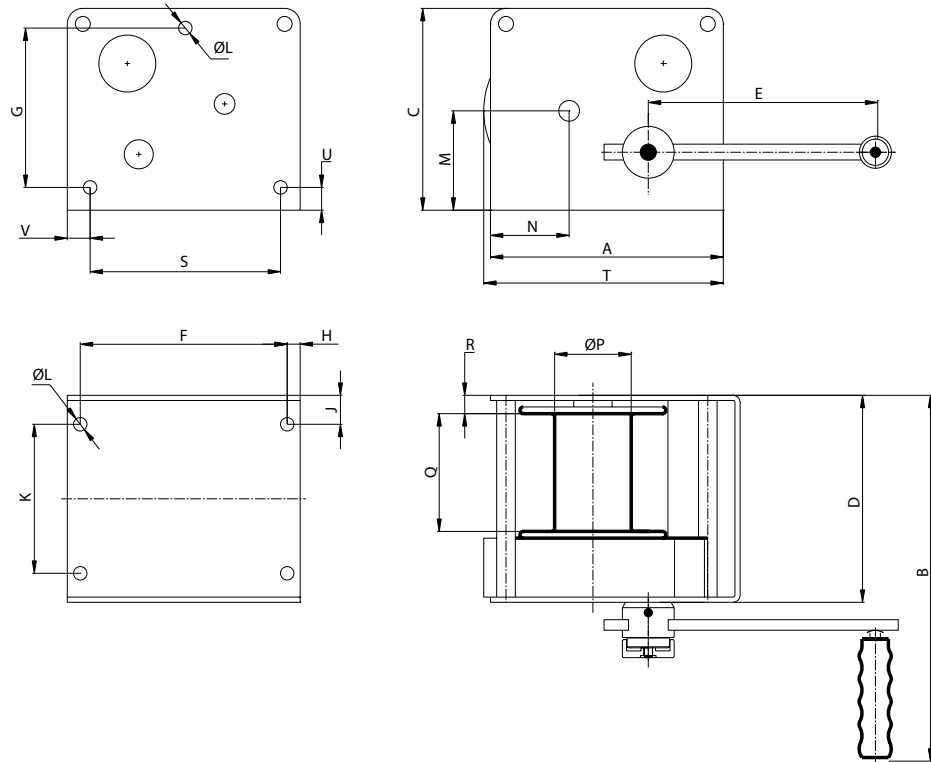
- Without steel wire rope.

Option

- Steel wire rope on request with hook and safety latch.

Norm:

- EN12100-1/2, EN13157



Type	Lifting capacity 1st layer (kg)	Lifting capacity last layer (kg)	Crank length (mm)	Cable max. (m)	Cable diameter (mm)	Gear ratio	Weight (kg)	ProductId
RGL-150	150	45	250/100	22	4	2.84 :1	9.2	2017001
RGL-300	300	100	250/100	30	5	6.67 :1	16.5	2017003
RGL-500	500	300	250/100	30	6	7.75 :1	18.5	2017005

Type	A (mm)	B (mm)	C (mm)	D (mm)	F (mm)	G (mm)	H (mm)	J (mm)	K (mm)	L (mm)	M (mm)	N (mm)	P (mm)	Q (mm)	R (mm)	S (mm)	T (mm)	U (mm)	V (mm)
RGL-150	180	324	150	150	154	102	13	18	114	7x9	70	66.4	55	77.3	18	132	177	18	24
RGL-300	225	390	195	200	200	154	12.5	28	144	13	96	76	62	107	25	184	235	22.5	20
RGL-500	242	380	200	200	200	154	21	28	144	7x13	102.7	83	74	107	24.5	184	251	22	29

WW worm gear winches



Properties

- Load pressure brake.
- Adjustable crank length; backwind-free.
- Drums and axes run on needle bearings.
- Models above load capacity of 2 kg have two speeds, which is operated by changing the crank over.
- Paint finish and enamel varnish are standard.

Standard delivery

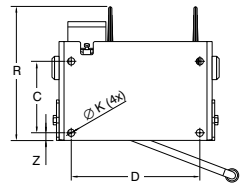
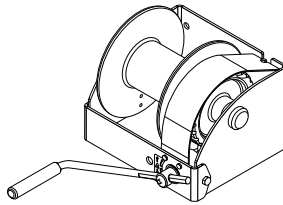
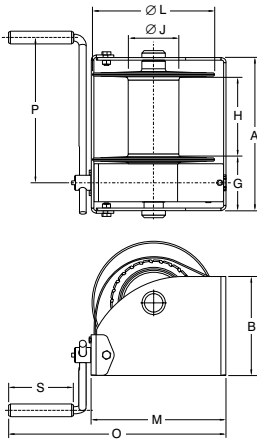
- Without steel wire rope

Option

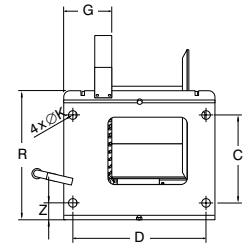
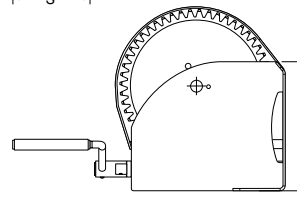
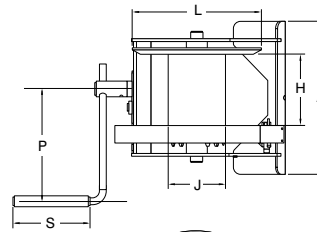
- Steel wire rope on request.

Norm:

- EN12100-1/2, EN13157



WW-250 - WW-1500



WW-2000 - WW-5000

Type	Lifting capacity 1st layer (kg)	Lifting capacity last layer (kg)	Cable max. (m)	Cable diameter (mm)	Lifting height per stroke (mm)	Crank force (kg)	Weight (kg)	ProductId
WW-250	250	95	104	4	17	3.5	13	2016001
WW-500	500	239	78	6	20	9.0	16	2016003
WW-1000	1000	542	63	8	13	15.5	26	2016005
WW-1500	1500	845	41	10	9	19.0	28	2016007
WW-2000	2000	1129	46	12	12/6	22/13	60	2016009
WW-3000	3000	1861	52	14	11/6	27/14	78	2016011
WW-4000	4000	2390	52	16	11/4	35/13	80	2016012
WW-5000	5000	3165	40	18	12/4	58/17	115	2016013

Type	A (mm)	B (mm)	C (mm)	D (mm)	G (mm)	H (mm)	J (mm)	K (mm)	L (mm)	M (mm)	N (mm)	O (mm)	P (mm)	R (mm)	S (mm)
WW-250	238	145	100	192	106	102	48	14	160	191	15	410	280	171	130
WW-500	269	160	115	223	107	131	70	14	190	221	15	440	325	192	130
WW-1000	302	195	141	254	110	160	102	14	240	266	15	490	350	264	130
WW-1500	302	250	178	254	111	160	102	14	240	278	15	490	350	306	130
WW-2000	410	310	196	360	137	176	133	25	312	382	45	724	380	421	220
WW-3000	436	365	251	386	137	176	165	25	376	442	47	784	380	523	220
WW-4000	436	365	251	386	137	174	165	25	376	442	47	784	380	523	220
WW-5000	436	425	316	386	137	200	219	25	437	494	38	836	380	599	220

RWL worm gear winch with freewheel system



Properties

- Braked design.
- Crank gradually adjustable in length.
- Drum and shafts provided with bearings.
- Freewheel, through protected pawl system.
- Powdercoating RAL2004.

Standard delivery

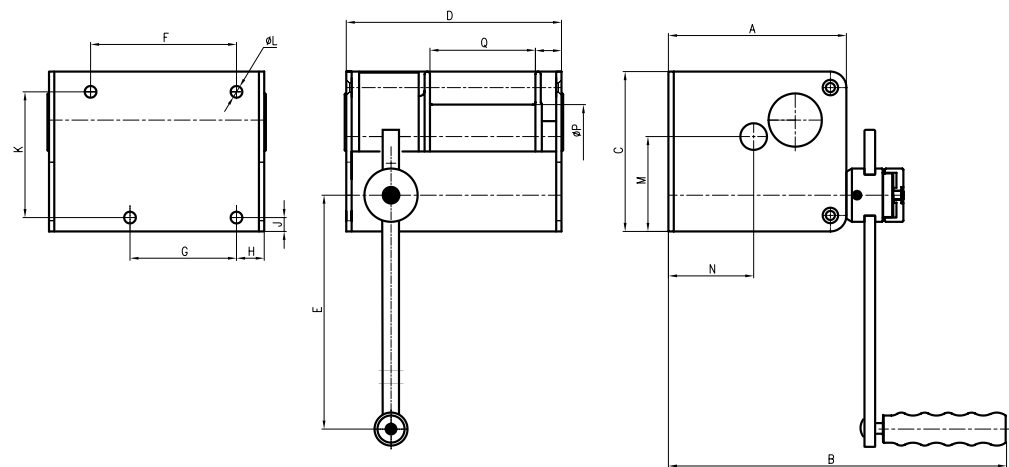
- Without steel wire rope

Option

- Steel wire rope on request and hook with safety latch.

Norm:

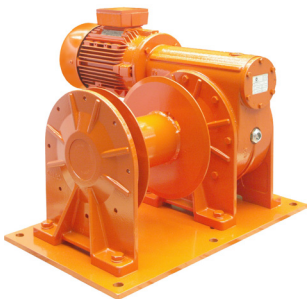
- EN12100-1/2, EN13157



Type	Lifting capacity 1st layer (kg)	Lifting capacity last layer (kg)	Crank length (mm)	Cable max. (m)	Cable diameter (mm)	Gear ratio	Weight (kg)	ProductId
RWL-250	250	75	250/100	20	5	15:1	11	2018001
RWL-500	500	300	250/100	30	6	24:1	17	2018003
RWL-1000	1000	550	350/100	35	10	26:1	36	2018005

Type	A (mm)	B (mm)	C (mm)	D (mm)	F (mm)	G (mm)	H (mm)	J (mm)	K (mm)	L (mm)	M (mm)	N (mm)	Q (mm)	R (mm)
RWL-250	167	332	150	202	137	100	26	13	118	11	89	80	99	24.5
RWL-500	195	367	190	260	182	132	33	18	142	13	111.5	94	146	32
RWL-1000	295	490	300	300	167	167	32	21	250	17	180.5	136	158	33

EHL electric hoisting winches



Electric hoisting winches are constructed to meet the requirements for machines listed in class of use K3 in EN14492 that is an applicable standard for European norms. In some European countries, application of overload limiters and/or limit switches is compulsory. Maritime design available on special order

Properties

- Lifting force range: 200 kg to 1700 kg.
- Drums run on bearings at both sides (from model EHL 58).
- Steel base plate (from model EHL 580).
- Grooved drums (from model EHL 580).
- Larger drum diameters.
- Maximum number of wire rope levels on drums: 3.

Brake motor properties

- Operating voltage 400V - 3 phase - 50 Hz.
- Class of protection F.
- Electric protection class motor IP56.
- Electric protection class brake IP55.

IMPORTANT:

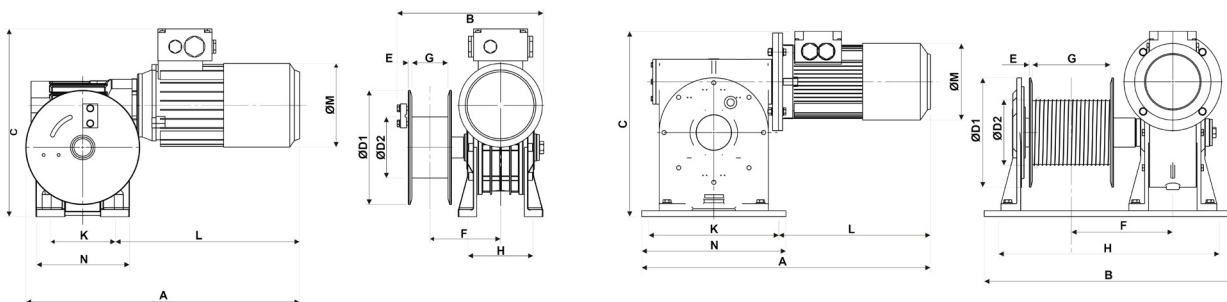
Above 1000 kg, overload limiter is required.

Standard delivery

- RAL2004 Orange painting.
- Does not include steel wire rope.
- Excluded control pendant.

Norm:

- EN12100-1/2, EN14492



Type	Safe working load 3rd layer (kg)	Cable diameter (mm)	Speed 1st layer (m/min)	Drum capacity 1st layer (m)	Drum capacity 3rd layer (m)	Power output (kW)	Weight (kg)	ProductId
EHL-200	200	5	5.8	3.5	12	0.55	24	2300027
EHL-450	450	6	7.0	3.5	12	1.1	40	2300029
EHL-580	580	7	5.7	8	25	1.1	95	2300031
EHL-800	800	8	6.5	8	25	1.5	98	2300033
EHL-1050	1050	10	7.9	10	35	3.0	150	2300035
EHL-1325	1325	11	9.3	13.5	45	4.0	209	2300037
EHL-1700	1700	12	9.7	15.5	50	5.5	315	2300039

Type	A (mm)	B (mm)	C (mm)	D1 (mm)	D2 (mm)	E (mm)	F (mm)	G (mm)	H (mm)	K (mm)	L (mm)	M (mm)	N (mm)
EHL-200	457	284.6	306.6	190	101.6	6	117	60	114	120	302	139	158
EHL-450	516	297.0	348.0	187	121.0	6	123	60	138	140	335	156	193
EHL-580	653	540.0	436.0	250	121.0	6	213	150	500	275	262	157	325
EHL-800	653	540.0	436.0	250	139.0	6	215	150	500	275	282	158	325
EHL-1050	738	640.0	474.0	280	168.0	8	262	200	600	320	307	190	370
EHL-1325	852	710.0	537.0	320	195.0	8	300	250	670	360	307	190	410
EHL-1700	976	850.0	629.0	370	205.0	8	333	300	800	380	324	216	440

EWL electric worm gear winches (NOT FOR LIFTING)



Price/quality ratio of series EWL electric self locking worm gear winches is excellent; they are available in designs complying with various classifications and norms.

Properties

- Pulling force: 250 kg to 2800 kg.
- Drums run on bearings at both sides (from model EWL 1000).
- Steel base plate (from model EWL 1000).

Standard delivery

- Does not include steel wire rope.
- Does not include control pendant.
- Above 1000 kg overload limiter is required.

Option

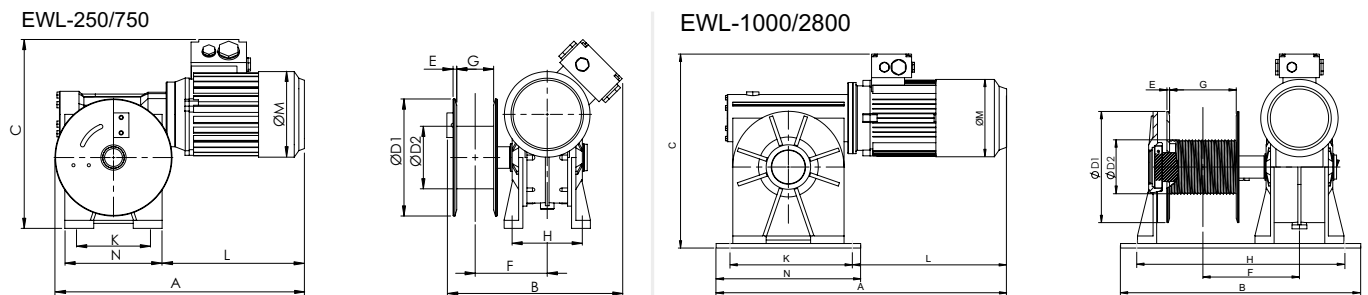
- Steel wire rope.
- Control pendant included switch box.
- Overload limiter (above 1000 kg required).
- Maritime design on special order.

IMPORTANT

Not suitable for lifting.

Norm:

- EN12100-1/2, EN14492



Type	Pulling force 1st layer (kg)	Pulling force 3rd layer (kg)	Cable diameter (mm)	Speed 1st layer (m/min)	Drum capacity 1st layer (m)	Drum capacity 5th layer (m)	Power output (kW) S2	Weight (kg)	ProductId
EWL-250	250	200	6	8.4	3.3	20	0.55	21	2300001
EWL-500	500	400	6	8.4	3.3	20	1.1	36	2300003
EWL-750	750	600	6	5.8	3.3	20	1.1	36	2300005
EWL-1000	1000	770	8	6	6.1	40	1.5	90	2300007
EWL-1250	1250	965	8	6	6.1	40	2.2	93	2300009
EWL-1750	1750	1340	10	5.8	8.2	53	3.0	136	2300011
EWL-2250	2250	1725	12	7	10	65	4.0	192	2300013
EWL-2800	2800	2115	14	7.8	11.6	75	5.5	302	2300015

Type	A (mm)	B (mm)	C (mm)	D1 (mm)	D2 (mm)	E (mm)	F (mm)	G (mm)	H (mm)	K (mm)	L (mm)	M (mm)	N (mm)
EWL-250	405	284.6	306.6	190	101.6	6	117	60	114	120	250	139	158
EWL-500	460	299.0	348.0	190	106.6	6	125	60	138	140	279	156	193
EWL-750	460	299.0	348.0	190	106.6	6	125	60	138	140	279	156	193
EWL-1000	589	540.0	436.0	250	101.6	6	215	150	500	275	264	130	325
EWL-1250	589	540.0	436.0	250	101.6	6	215	150	500	275	282	158	325
EWL-1750	660	640.0	474.0	280	121.0	8	262	200	600	320	307	190	370
EWL-2250	706	710.0	524.0	320	146.0	8	300	250	670	360	307	190	410
EWL-2800	825	850.0	607.0	370	159.0	8	333	300	800	380	324	216	440

CP 230VAC lifting-/pulling winch



REMA CP lifting / pulling winch 230 VAC

Properties:

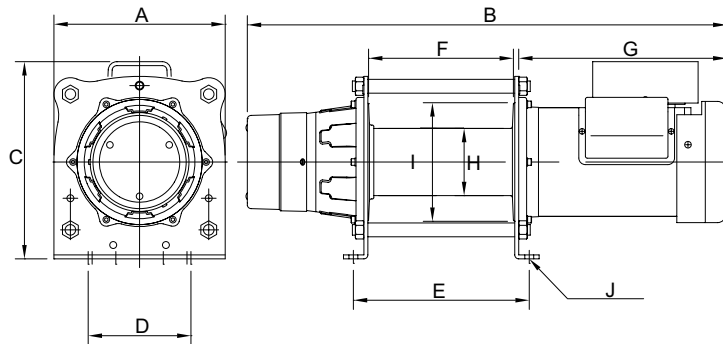
- Control cable + pushbutton cabinet with emergency stop IP65 included.
- Electronic magnet brake.
- Design with bearing.
- Steel cable + hook included.
- Planetary transmission.

Technical specifications:

- **CP-300** Motor IP44, 4 poles - 1.15 kW.
- **CP-500** Motor IP44, 4 poles - 1.8 kW.
- 230 VAC, 1 Phase, 50 Hz.

Norm:

- EN12100-1/2, EN14492



Type	WLL (kg)	Maximum pulling force on the drum (kg)	Speed 1st layer (m/min)	Cable length (m)	Cable diameter (mm)	Dimension L x B x H (mm)	Drum width (mm)	Drum diameter (mm)	Weight (kg)	ProductId
CP-300	300	600	10	30	6	565 x 210 x 241	110	94	38	2382007
CP-500	500	1000	10	60	7	694 x 260 x 299	220	102	55	2382009

Type	A (mm)	B (mm)	C (mm)	D (mm)	E (mm)	F (mm)	G (mm)	H (mm)	I (mm)	J (mm)
CP-300	210	565	241	142	142	110	280	94	154	6 x 10,5
CP-500	260	728	299	156	267	220	316	102	180	6 x 13,5

CP 400VAC lifting-/pulling winch



REMA CP lifting / pulling winch 400 VAC, 3 phase, 50Hz.

Norm:

- EN12100-1/2, EN14492

Type	WLL (kg)	Maximum pulling force on the drum (kg)	Speed 1st layer (m/min)	Cable length (m)	Cable diameter (mm)	Dimension L x B x H (mm)	Drum width (mm)	Drum diameter (mm)	Weight (kg)	ProductId
CP-T500	500	1000	10	60	7	694 x 260 x 299	220	102	55	2382109

Type	A (mm)	B (mm)	C (mm)	D (mm)	E (mm)	F (mm)	G (mm)	H (mm)	I (mm)	J (mm)
CP-T500	260	728	299	156	267	220	316	102	180	6 x 13,5