

REMA DG10 drum grab

172

Drum handling

173

Drum trucks

176



**REMA DG10 drum grab**



The REMA DG10 is an innovative patented invention for quickly and safely lifting 220 liters of steel and plastic drums with an edge diameter of 570 to 610 mm. The drums can be lifted both from standing and lying position. Furthermore, it is possible to lift a specific drum from the middle of a group of barrels.

**User information**

- It is easy to mount the grab on the rim of a drum by pulling the grey movable handle over the drum rim.

**Technical specifications**

- Patented.
- Test load 2000 kg.
- Safety factor 5.
- 360 degree rotatable lifting eye.
- Self-centering.
- Fast and safe to use.

**Application**

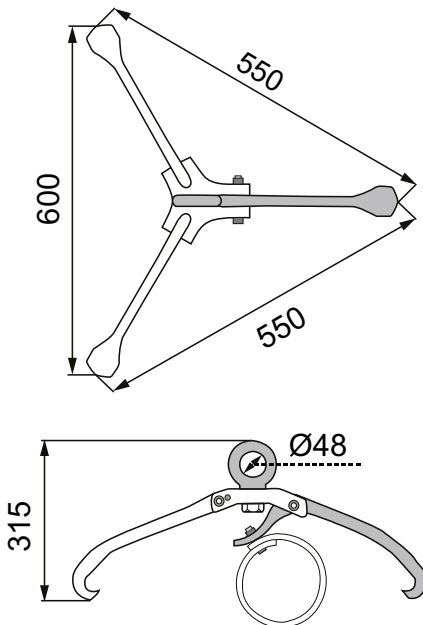
- For steel and plastic vessels with an edge diameter of 570 to 610 mm.
- Oil processing industry.
- Chemical industry.
- Workplaces.
- Agricultural sector.
- Waste processing industry.
- Food industry.
- Transport sector.
- Military purposes.
- Shipping

**Important**

- The drums must have a thickened edge with a diameter of 570 to 610 mm.

**Norm:**

- EN12100-1/2, EN13155



Type	WLL (kg)	Dimensions (mm)	Jaw opening (mm)	Height (mm)	Weight (kg)	ProductId
DG10	1000	550-600	570-610	315	8.0	3308201

**CVA Barrel clamp**

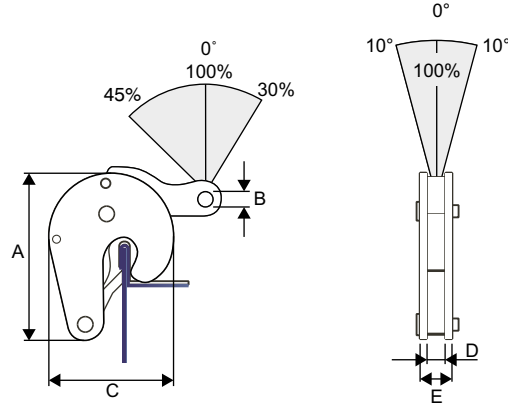


**Properties:**

- Intended for safe lifting and handling of standing steel barrels containing liquids.
- Automatic locking mechanism.
- Complete with suspension eye.

**Norm:**

- EN12100-1/2, EN13155, AS4991, ASME-B30,20



Type	WLL (kg)	Jaw opening (mm)	A (mm)	B (mm)	C (mm)	D (mm)	E (mm)	Weight (kg)	ProductId
CVA-0.5	500	0 - 17	121	12	96	15	28	1,6	3308001

**CVB barrel clamp**

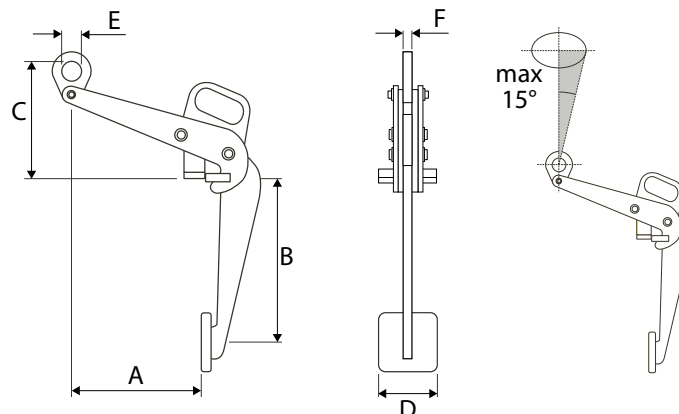


**Properties:**

- Intended for safe lifting and handling of barrels allowing the lifted barrel to be held steadily in the vertical position.
- Easily operable locking mechanism.
- Complete with suspension eye.

**Norm:**

- EN12100-1/2, EN13155, AS4991, ASME-B30,20



Type	WLL (kg)	A (mm)	B (mm)	C (mm)	D (mm)	E (mm)	F (mm)	Weight (kg)	ProductId
CVB-0.5	500	305	434	330	100	50	10	7,1	3308003

**Drum chain assembly (G8)**



Intended for safe lifting and handling of steel barrels in horizontal position.

**Properties**

- 1 x RML-86-G10 masterlink (2631006)
- 2 x RCX-6mm C-link (2636006)
- 1,8 M chain 6 x 18 mm (2610006)
- 2 x drum hooks S-377 (2662006)

**Norm:**

- EN1677-1->7, EN818-1->4

Type	WLL (kg)	ProductId
RML-RCX-S377-1800	1000	2629020

**DTS fork truck barrel clamp**

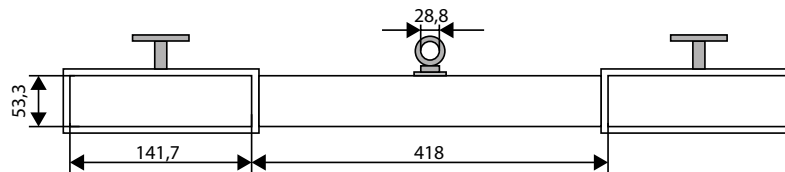


**Properties**

- Suitable for steel barrels of 210 liter capacity and max. diameter of 570 mm.
- Clamping force is provided by the dead weight of the full barrel.
- Can be easily mounted by simply pushing the clamp onto the fork.
- Robust steel construction.

**Norm:**

- EN12100-1/2, EN13155



Type	WLL (kg)	Jaw opening (mm)	Weight (kg)	ProductId
DTS-10	680	572	36	4252005

**DD steel barrel dolly**



A simple aid for handling steel barrels of 210 liter.

**Properties**

- Frame welded from steel band.
- Steer wheels with zinc-coated brackets.
- The threads of wheels are of oil- and water-resistant.
- Zinc-coated bolts and nuts.

**Norm:**

- EN12100

Type	WLL (kg)	Diameter (mm)	Weight (kg)	ProductId
DD-210	410	600	5	4252007

## VK barrel clamp

For lifting different types of barrels.

### Properties

- **VK-350** type for steel barrels.
- **VK-360** type for open and tightly closed steel barrels and plastic barrels with L- or X-rings.
- **VK-500** type for open or closed steel barrels.
- **VKH-500** for horizontal transport of steel barrels.
- Simply useable with a hoist or lifting hooks.

### Norm:

- EN12100-1/2, EN13155



VK-350



VK-360



VK-500



VKH-500

Type	WLL (kg)	Weight (kg)	ProductId
VK-350	350	9,5	3308101
VK-360	360	4,5	3308103
VK-500	500	5	3308105
VKH-500	500	7,6	3308107

**DH hydraulic barrel truck**



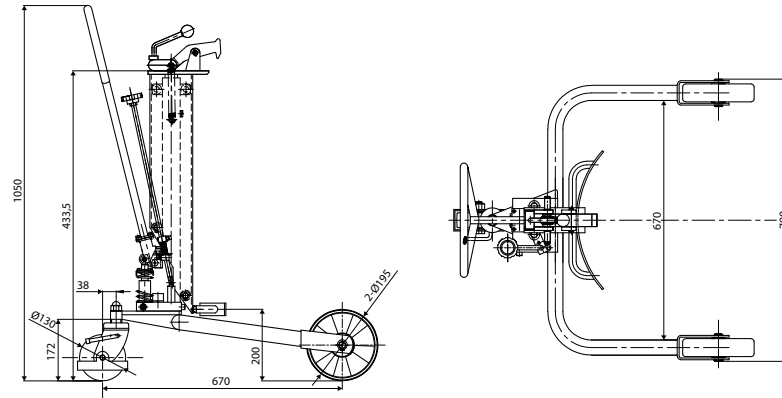
For handling steel barrels containing liquid in standing position (210 liter).

**Properties**

- Easy operation due to the hydraulic pump provided.
- Excellent rolling properties due to the combination of two large side wheels and a steer wheel.

**Norm:**

- EN12100



Type	WLL (kg)	Lifting height (mm)	Maximum barrel height (mm)	Weight (kg)	ProductId
DH-250	250	345	915	40	4252001

**DM movable barrel truck swivel**



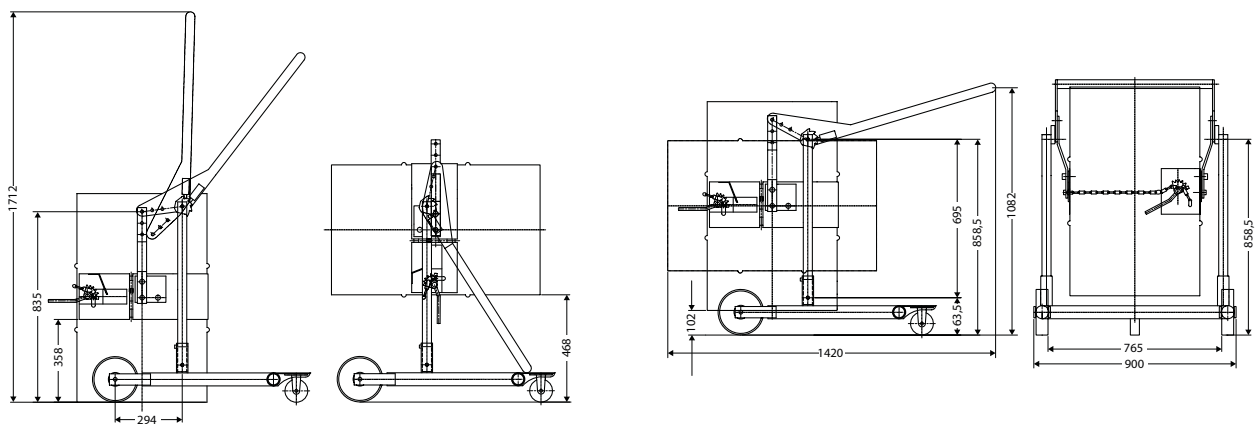
For lifting, handling, tipping and emptying of steel barrels (210 liter of liquid).

**Properties**

- Tipping arrangement with locking function both in vertical and horizontal positions.

**Norm:**

- EN12100



Type	WLL (kg)	Dimensions L x W (mm)	Lifting height (mm)	Maximum barrel height (mm)	Weight (kg)	ProductId
DM-365	365	1420 x 900	292	915	50	4252003