



REMA Stainless Steel Chain Sling (G6) information

Properties of REMA stainless steel (Grade 6)

- Usable in corrosive environments
- Usable at higher temperatures (-45°C to +350°C)

Applications

- Foodstuffs industry, corrosive environments, purification plants, fishery, meat-processing industry etc.


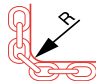

REMA stainless steel operating load table

		1-leg		2-leg		3/4-leg		Endless		
Safety factor		4								
Angle		-	-	0 - 45°	45° - 60°	0 - 45°	45° - 60°	-		
Load factor		1	0.8	1.4	1	1.12	0.8	2.1	1.5	1.6
Code	d	WLL								
REMA - 6	6	900	720	1260	900	1008	720	1890	1350	1440
REMA - 7	7	1250	1000	1750	1250	1400	1000	2625	1875	2000
REMA - 8	8	1600	1280	2240	1600	1792	1280	3360	2400	2560
REMA - 10	10	2500	2000	3500	2500	2800	2000	5250	3750	4000
REMA - 13	13	4250	3400	5950	4250	4760	3400	8925	6375	6800

Standards applied according to: EN 818 and EN 1677.

General use

If chains and/or accessories are used under unusual or onerous conditions (extreme temperatures, asymmetric load, angled load or dynamic load). The values in the above table must be reduced by the load factors below.

Temperature	The use of REMA stainless steel products is not permitted in temperatures below -45°C or above +350°C		
Load factor of REMA stainless steel	1		
Asymmetric load distribution	Always assume a single strand; in case of doubt, always use a single strand as load factor.		
Angled load (d = thickness of the material)	R = greater than 2 x d 	R = greater than d 	R = less than d 
Load factor	1	0.7	0.5

Shock loads

Crane operators must take account of the hazard of shock loads. A chain may break due to a shock load even if the load is below the maximum operating load for this chain.

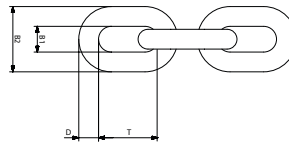
A high acceleration or shock load may be caused by a sudden movement of the crane. Avoid jerking, the phenomenon that happens when the chain is suddenly pulled straight with great force. Hazardous situations can arise due to sudden impact from falling loads.

Shock loads	slight shocks	medium shocks	severe shocks
Load factor	1	0.7	not permitted

RC stainless steel chain AISI 316 (Grade 6)



Norm:
- EN1677, EN818-4

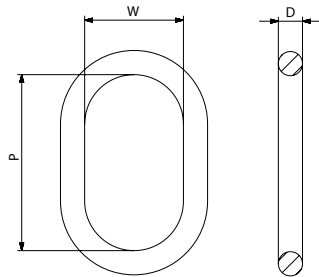


Type	WLL (kg)	BF (mm)	P (mm)	D (mm)	Weight (kg/pce/m)	ProductId
RC 6 x 18	900	8	22.2	6	18	2686006
RC 7 x 21	1.250	9.1	9	18	21	2686007
RC 8 x 24	1.600	10.4	29.6	8	24	2686008
RC 10 x 30	2.500	14	37	10	30	2686010
RC 13 x 39	4.250	16.9	48.1	13	39	2686013

RCM masterlink 1-2 leg AISI 316 (Grade 6)

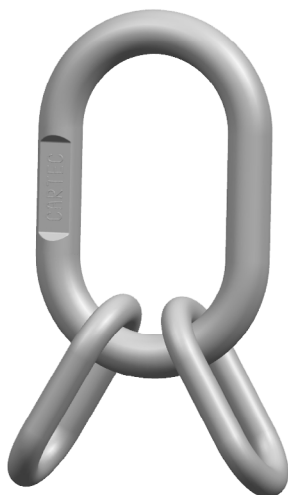


Norm:
- EN1677, EN818-4

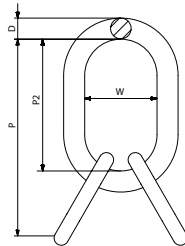


Type	WLL (kg)	P (mm)	D (mm)	W (mm)	Chain 1-leg (mm)	Chain 2-legs (mm)	Weight (kg/pce/m)	ProductId
RCM0706-7/6	1.600	110	13	60	6/7	6	0.34	2686106
RCM0807-8/7	1.600	110	13	60	8	-	0.34	2686107
RCM1008-7/8	2.600	110	16	60	10	7/8	0.53	2686108
RCM1310-13/10	4.250	135	18	75	13	10	0.80	2686110
RCM1613-16/13	6.300	160	22	90	16	13	1.50	2686113

RCMC masterlink 3-4 leg AISI 316 (Grade 6)

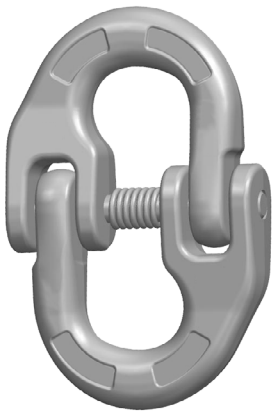


Norm:
- EN1677, EN818-4

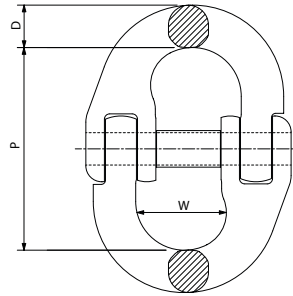


Type	WLL (kg)	P (mm)	D (mm)	P2 (mm)	W (mm)	Chain 3/4-legs (mm)	Weight (kg/pce/m)	ProductId
RCMC06-6MM	1.700	154	13	110	60	6	0.52	2686206
RCMC07-7MM	2.600	164	16	110	60	7	0.97	2686207
RCMC08-8MM	3.350	205	18	135	75	8	1.60	2686208
RCMC10-10MM	5.250	245	22	160	90	10	2.76	2686210
RCMC13-13MM	8.900	295	26	180	100	13	4.45	2686213

RCL C-link AISI 316 (Grade 6)



Norm:
- EN1677, EN818-4

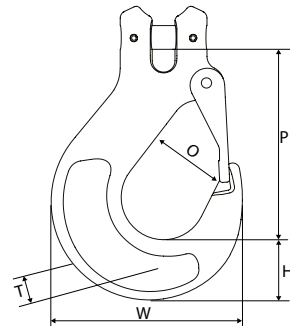


Type	WLL (kg)	P (mm)	D (mm)	W (mm)	Weight (kg/pc/m)	ProductId
RCL06-6MM	900	45	7.50	18	0.1	2686306
RCL07-7MM	1.250	50.5	9	20.5	0.2	2686307
RCL08-8MM	1.600	62	10	23.5	0.3	2686308
RCL10-10MM	2.500	72	12.6	27.5	0.7	2686310
RCL13-13MM	4.250	87.5	16.7	33.5	1.2	2686313

RCB clevis sling hook AISI 316 (Grade 6)



Norm:
- EN1677, EN818-4

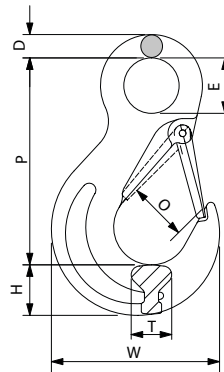


Type	WLL (kg)	P (mm)	T (mm)	H (mm)	O (mm)	W (mm)	Weight (kg/pc/m)	ProductId
RCB06SF-6/5MM	900	81	14	21	28	73	0.4	2686506
RCB07SF-7MM	1.250	112	20	30	38	102	0.8	2686507
RCB08SF-8MM	1.600	112	20	30	38	102	0.8	2686508
RCB10SF-10MM	2.500	123	28	34	46	119	1.5	2686510

RCA eye sling hook with latch AISI 316 (Grade 6)



Norm:
- EN1677, EN818-4

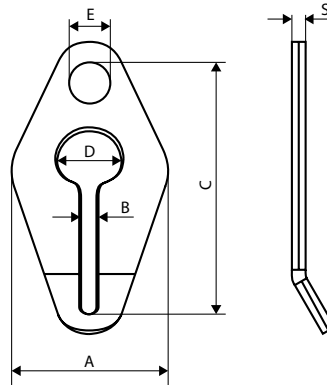


Type	WLL (kg)	P (mm)	D (mm)	E (mm)	T (mm)	H (mm)	O (mm)	W (mm)	Weight (kg/pc/m)	ProductId
RCA06SF-6/5MM	900	90	8	21	13.5	21	23	72	0.3	2686406
RCA08SF-8/7MM	1.600	118	13	27	19.5	29	27	103	0.6	2686408
RCA10SF-10MM	2.500	140	15	37	27	33	39	120	0.3	2686410
RCA13SF-13MM	4.250	182	18	48	35	46	51	155	2.2	2686413

RAC eye shortening grabhook AISI (Grade 6)



Norm:
- EN1677, EN818-4

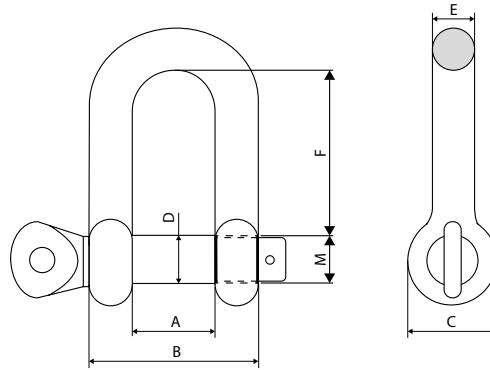


Type	WLL (kg)	A (mm)	B (mm)	C (mm)	D (mm)	E (mm)	S (mm)	Weight (kg/pc/m)	ProductId
RAC06-6/5	900	55	8	81	26	16	8.5	0.20	2686606
RAC08-8/7	1.600	71	11	110	34	22	10.5	0.57	2686608
RAC10-10	2.500	90	12	135	40	26	13	1.06	2686610
RAC13-13	4.250	112	17	170	52	32	16.5	2.20	2686613

RSH D-shackle AISI 316 (G6) AISI (Grade 6)



Norm:
- EN1677, EN818-4



Type	WLL (kg)	A (mm)	B (mm)	C (mm)	D (mm)	E (mm)	F (mm)	M (mm)	Weight (kg/pc/m)	ProductId
RSH005 500 KG	500	18	34	18	9	8	33	M10	0.07	2686901
RSH012 1250 KG	1.250	25	49	25	13	12	40	M14	0.22	2686903
RSH020 2000 KG	2.000	32	64	32	17	16	60	M18	0.52	2686905
RSH032 3200 KG	3.200	41	79	47	21	19	78	M22	0.80	2686907
RSH050 5000 KG	5.000	56	106	60	29	25	109	M30	2.20	2686909

RTI label AISI 316 (Grade 6)



Norm:
- EN1677, EN818-4

Type	Description	ProductId
RTI01	Stainless steel tag 1-leg chain sling	2690020
RTI02 2-3-4	Stainless steel tag 2-3-4-leg chain sling	2690021

