

| | |
|------------------------|----|
| Dynamometer DSD04 | 62 |
| Dynamometer DSD05 | 64 |
| Mechanical crane scale | 67 |



Dynamometer 04



Includes plastic case, manual and calibration report.

Mechanical properties

- Anodized aluminum house.
- Protection class IP 65.
- Overload indication at 10% overload.
- Test load 2 x WLL.
- Safety factor 5 x WLL.

Electrical specifications

- Alkaline battery (9V type).
- Battery operating time about 100 hours.

Electronic specifications

- LCD display with 5 positions, digit height 17 mm.
- Operating temperature range between -10° C to + 55° C.
- Accuracy up to approx 0.15% of the reading value.

Functions

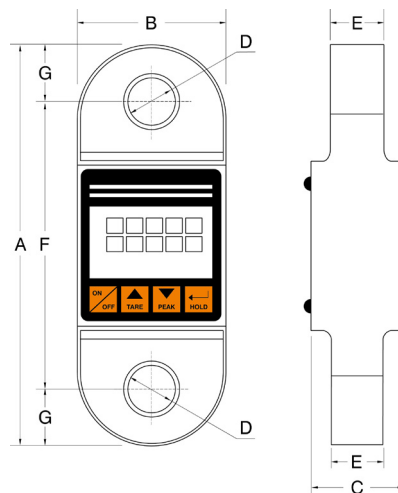
- Automatic resetting when switched on.
- Easy-to-use menu: ON/OFF, tare, peak value and hold buttons.
- Self-calibrating at zero and weight values.
- Readout possibilities: gross, net and tare weight.
- In peak value function, maximum weight is held.
- In hold function, current weight is held.
- Measuring unit selection (kg - t - ton - lbs - daN - kN).
- Automatic power supply OFF.

Option

- Bow shackle from 10T.

Norm:

- EN12100-1/2, EMC2004/108/EG, EN13155, EN13889



| Type | WLL (kg) | Resolutive (kg) | A (mm) | B (mm) | C (mm) | D (mm) | E (mm) | F (mm) | G (mm) | Bow shackle (t) | Weight (kg) | ProductId |
|------------|----------|-----------------|--------|--------|--------|--------|--------|--------|--------|-----------------|-------------|-----------|
| DSD04-1.25 | 1250 | 0,5 | 192 | 85 | 54 | 15 | 16 | 142 | 25 | 1,50 in. | 1.15 | 1508000 |
| DSD04-2.5 | 2500 | 1 | 218 | 85 | 54 | 21 | 25 | 160 | 28 | 3,25 in. | 1.35 | 1508001 |
| DSD04-5.0 | 5000 | 2 | 230 | 85 | 54 | 27 | 32 | 165 | 32.5 | 6.50 in. | 1.85 | 1508003 |
| DSD04-10.0 | 10000 | 5 | 315 | 100 | 59 | 38 | 49 | 200 | 57.5 | 12.00 ex. | 3.60 | 1508005 |
| DSD04-20.0 | 20000 | 10 | 350 | 126 | 70 | 53 | 70 | 210 | 70 | 25.00 ex. | 5.50 | 1508007 |

Dynamometer 04 TX / RX with readable radio remote control



Includes plastic case, manual and calibration report.

Anodized aluminum house.

- Protection class IP 65.
- Overload indication at 10% overload.
- Test load 2 x WLL.
- Safety factor 5 x WLL.

Electrical specifications

- Rechargeable batteries including charger.
- Charger: Input 230 VAC, output 20 VDC.
- Battery operating time about 100 hours.

Electronic specifications

- LCD display with 5 positions, digit height 17 mm.
- Operating temperature between -10 °C and + 55 °C
- Accuracy up to approx. 0.15% of the reading value.

RX-PORT electrical specifications

- Alkaline batteries (3 x AA type).
- Stand time approx. 150 hours.
- Battery indicator.

RX-PORT electronic specifications

- LCD display with 5 positions, 12 mm digit height.
- 433.92 MHz frequency control.
- Operating temperature between -5 °C to + 55 °C.
- RS232 port for printer or PC connection (not all types of printers).



TX-LOAD electrical specifications

- Transmission range max 50 m.

TX-LOAD electronic specifications

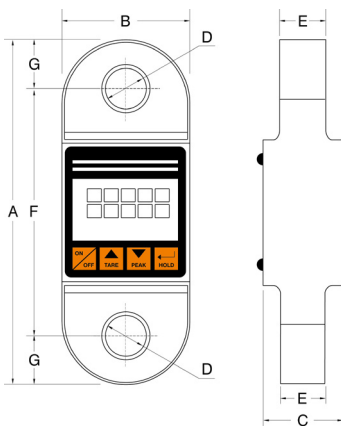
- 433.92 MHz frequency control.

Option

- Bow shackle from 10T.

Norm:

- EN12100-1/2, EMC2004/108/EG, EN13155, EN13889



| Type | WLL (kg) | Resolutie (kg) | A (mm) | B (mm) | C (mm) | D (mm) | E (mm) | F (mm) | G (mm) | Bow shackle (t) | Weight (kg) | ProductId |
|---------------|----------|----------------|--------|--------|--------|--------|--------|--------|--------|-----------------|-------------|-----------|
| DSD04-05TX/RX | 5000 | 2 | 230 | 85 | 54 | 27 | 32 | 168 | 32.5 | 6.5 in. | 1.85 | 1512003 |
| DSD04-10TX/RX | 10000 | 5 | 315 | 100 | 59 | 38 | 49 | 200 | 57.5 | 12 ex. | 3.60 | 1512005 |
| DSD04-25TX/RX | 25000 | 10 | 350 | 126 | 70 | 53 | 70 | 210 | 70 | 25.00 ex. | 5.50 | 1512009 |
| DSD04-50TX/RX | 50000 | 20 | 430 | 128 | 100 | 72 | 100 | 260 | 90 | 55.00 ex. | 13.5 | 1512011 |

Dynamometer 05



Includes plastic case, manual and calibration report.

Mechanical properties

- Aluminum housing.
- Alloy steel pulling unit.
- Test load 2 x WLL (without losing accuracy).
- Safety factor 5 x WLL.
- International Protection Rating / Ingress Protection: IP65 (EN60529)

Electrical specifications

- Alkaline battery (3 x AA type).
- Battery operating time approx. 180 hours.

Electronic specifications

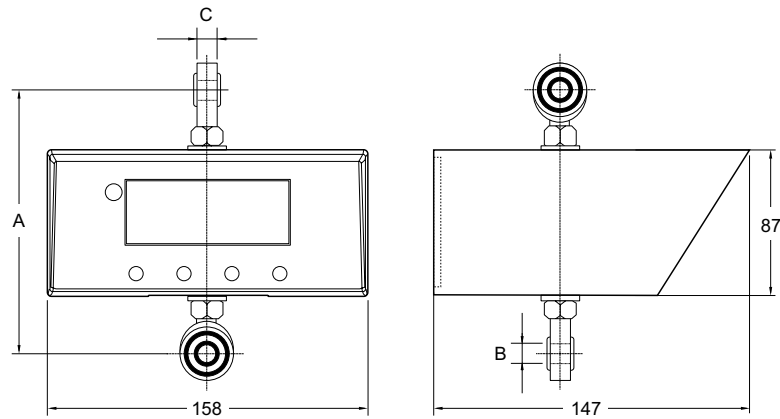
- Operating temperature between -5° C to + 55° C.
- Accuracy up to approx. 0.1% of the reading value.
- Battery indicator.

Option

- U-13 Unilock bow schackle (2635013).

Norm:

- EN12100-1/2, EMC2004/108/EG, EN13155, EN13889



| Type | WLL (kg) | Resolutie (kg) | A (mm) | B (mm) | C (mm) | D (mm) | E (mm) | F (mm) | Bow shackle (t) | Weight (kg) | ProductId |
|------------|----------|----------------|--------|--------|--------|--------|--------|--------|-----------------|-------------|-----------|
| DSD05-0.6T | 600 | 0.2 | 170 | 16 | 21 | - | - | - | U-13 ex. | 2.68 | 1514001 |
| DSD05-1.0T | 1000 | 0.5 | 170 | 16 | 21 | - | - | - | U-13 ex. | 2.68 | 1514003 |

Dynamometer 05T with remote control for tare



Includes plastic case, manual and calibration report.

Mechanical properties

- Aluminum housing.
- Alloy steel pulling unit.
- Test load 2 x WLL (without losing accuracy).
- Safety factor 5 x WLL.
- International Protection Rating / Ingress Protection: IP65 (EN60529).

Electrical specifications

- Alkaline battery (3 x AA type).
- Battery operating time approx. 180 hours.

Electronic specifications

- Operating temperature between -5 °C to + 55 °C.
- Accuracy up to approx. 0.1% of the reading value.
- Battery indicator.

Standard delivery

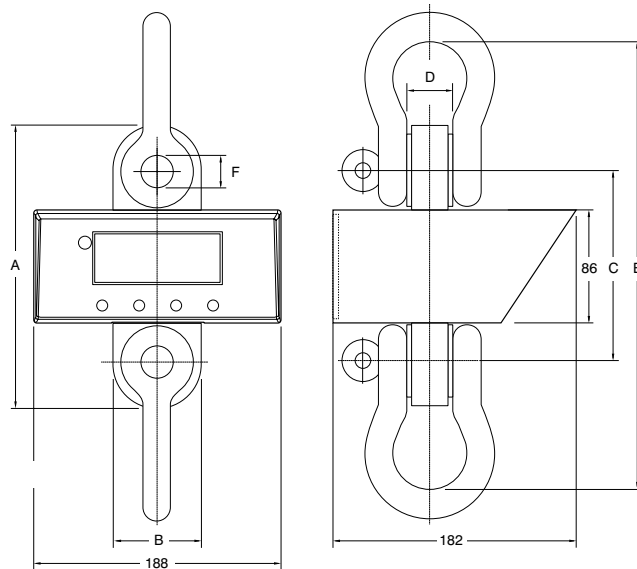
- Bow shackles (3,2T and 6,3T).
- Remote control to tare.

Option

- Bow shackle from 10T.

Norm:

- EN12100-1/2, EMC2004/108/EG, EN13155, EN13889



| Type | WLL (kg) | Resolutie (kg) | A (mm) | B (mm) | C (mm) | D (mm) | E (mm) | F (mm) | Bow shackle (t) | Weight (kg) | ProductId |
|--------------|----------|----------------|--------|--------|--------|--------|--------|--------|-----------------|-------------|-----------|
| DSD05T-3.2T | 3200 | 1 | 199 | 69 | 130 | 25 | 269 | 20 | 3.25 in. | 4.2 | 1514005 |
| DSD05T-6.3T | 6300 | 2 | 213 | 69 | 144 | 35 | 348 | 26 | 6.5 in. | 6.5 | 1514007 |
| DSD05T-10.0T | 10000 | 5 | 265 | 100 | 181 | 50 | 455 | 36 | 12 ex. | 10.5 | 1514009 |

Dynamometer 05TX/RX with RX hand read receiver



Includes plastic case, manual and calibration report.

Mechanical properties

- Aluminum housing.
- Alloy steel pulling unit.
- Test load 2 x WLL (without derailment of tensile force unit).
- Safety factor 5 x WLL.
- International Protection Rating / Ingress Protection: IP65 (EN60529).

Electrical specifications

- Alkaline battery (3 x AA type).
- Battery operating time approx. 180 hours.

Electronic specifications

- Operating temperature between -5° C to + 55° C.
- Accuracy up to approx. 0.1% of the reading value.
- Battery indicator.

RX-PORT electrical specifications

- Alkaline batteries (3 x AA type).
- Stand time approx. 150 hours.
- Battery indicator.

RX-PORT electronic specifications

- LCD display with 5 positions, 12 mm digit height.
- 868 MHz frequency control.
- Operating temperature between -5° C to + 55° C.
- RS232 port for printer or PC connection.

TX-LOAD electrical specifications

- Transmission range max. 50m.

TX-LOAD electronic specifications

- 868 MHz frequency control.

Standard delivery

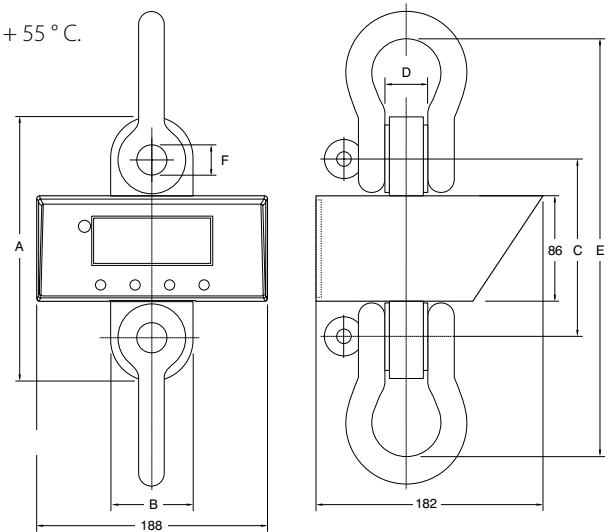
- Bow shackles.
- Remote control.

Option

- Bow shackle from 10T.

Norm:

- EN12100-1/2, EMC2004/108/EG, EN13155, EN13889



| Type | WLL (kg) | Resolutie (kg) | A (mm) | B (mm) | C (mm) | D (mm) | E (mm) | F (mm) | Bow shackle (t) | Weight (kg) | ProductId |
|------------------|----------|----------------|--------|--------|--------|--------|--------|--------|-----------------|-------------|-----------|
| DSD05TX/RX-3.2T | 3200 | 1 | 199 | 69 | 130 | 25 | 269 | 20 | 3.25 in. | 4.7 | 1513005 |
| DSD05TX/RX-6.3T | 6300 | 2 | 213 | 69 | 144 | 35 | 348 | 26 | 6.5 in. | 7.0 | 1513007 |
| DSD05TX/RX-10.0T | 10000 | 5 | 265 | 100 | 181 | 50 | 455 | 36 | 12 ex. | 9.6 | 1513009 |

TEO Mechanical crane scale



**TEO-200 /
TEO-5000**

The REMA TEO mechanical crane scale with one suspension eye and hook with safety latch up to 5,000 kg and from 12,500 kg up to 85,000 kg with 2 eyes.

Properties

- Robust construction
- Maintenance-free hydrostatic principle
- Easy zero and tare adjustment
- Designed for continuous use
- Accuracy within +/- 1% of full scale
- Light weight – low height
- Strong acrylic glass covers the dial plate
- Large dial plate diameter 160 mm
- Temperature range -20 / +50 C (-4 / +122 F).

Options

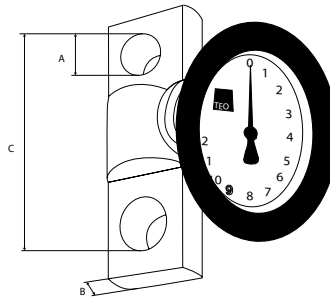
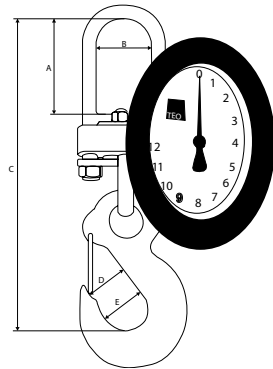
- Remote reading.
- Bow shackle.

Norm:

- EN12100-1/2, EN13155



**TEO-12.500/
TEO-85.000**



| Type | WLL (kg) | Resolutie (kg) | A (mm) | B (mm) | C (mm) | D (mm) | E (mm) | Weight (kg) | ProductId |
|------------|----------|----------------|--------|--------|--------|--------|--------|-------------|-----------|
| TEO-200 | 200 | 1 | 60 | 53 | 230 | 27 | 35 | 5 | 1550001 |
| TEO-320 | 320 | 2 | 60 | 53 | 230 | 27 | 35 | 5 | 1550003 |
| TEO-500 | 500 | 2 | 60 | 53 | 230 | 27 | 35 | 5 | 1550005 |
| TEO-750 | 750 | 5 | 60 | 53 | 230 | 27 | 35 | 5 | 1550007 |
| TEO-1250 | 1.250 | 5 | 60 | 53 | 230 | 27 | 35 | 5 | 1550009 |
| TEO-2000 | 2.000 | 10 | 60 | 53 | 230 | 27 | 35 | 5 | 1550011 |
| TEO-3200 | 3.200 | 20 | 75 | 53 | 280 | 34 | 46 | 5.5 | 1550013 |
| TEO-5000 | 5.000 | 20 | 75 | 53 | 300 | 42 | 56 | 6.5 | 1550015 |
| TEO-12.500 | 12.500 | 50 | 40 | 41 | 213 | - | - | 8.1 | 1550017 |
| TEO-25.000 | 25.000 | 100 | 55 | 42 | 267 | - | - | 12.9 | 1550019 |
| TEO-50.000 | 50.000 | 200 | 75 | 56 | 329 | - | - | 25 | 1550021 |
| TEO-85.000 | 85.000 | 500 | 85 | 60 | 390 | - | - | 60 | 1550023 |

