

**HTH fork-lift hook**

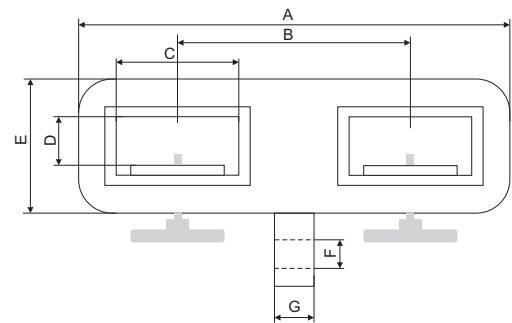


**Properties**

- Make a mobile crane of your fork-lift truck.
- Screw clamps on the forks for safety.
- Included swivel hook (Grade 8).

**Norm:**

- EN12100-1/2, EN13155, EN1677, EN13889



**IMPORTANT**

- Do not exceed the capacity of the fork-lift truck.
- Pay attention to the load's centre of gravity.
- Prevent wobbling of the load during transport.

Type	WLL (kg)	Dimensions fork opening (mm)	Weight (kg)	ProductId
HTH-1000	1000	125 x 50	14	3963501
HTH-2500	2500	135 x 55	25	3963503
HTH-5000	5000	145 x 55	46	3963505

Type	A (mm)	B (mm)	C (mm)	D (mm)	E (mm)	F (mm)	G (mm)
HTH-1000	437	255	135	55	116	24	16
HTH-2500	657	450	145	60	140	27	20
HTH-5000	600	420	180	100	175		

**Forklift crane arm HKA**



**Properties**

- 10 positions extendable.
- 4 positions adjustable.
- Equipped with lock chain.
- Equipped with fork insertion and lock chain.
- Color orange.

**Technical specifications**

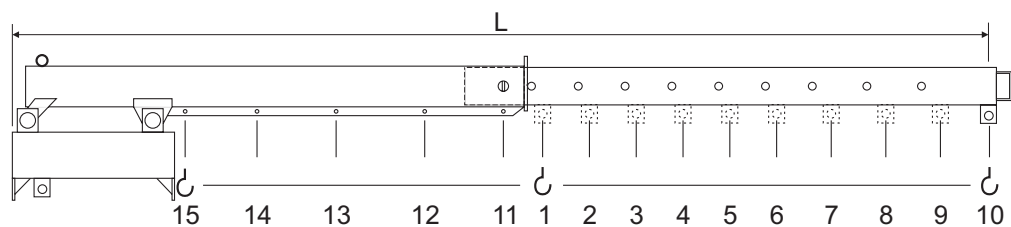
- Fork inserts 2000 kg = 180 x 80 mm
- Fork inserts 3000 kg = 225 x 80 mm

**Application**

- Ideal for all kinds of disassembly and assembly work.

**Norm:**

- EN12100-1/2, EN13155, EN1677



Type	WLL (kg)	Length (mm)	Breedte (mm)	Weight (kg)	ProductId
HKA-2.0	2000	2165-3740	520	175	3965002
HKA-3.0	3000	2165-3740	643	280	3965003