

RBZ sheaves, supported

Product information



REMA[®]

Properties

- Suitable both for manual and mechanical drive.
- Maintenance-free design.
- Sheave dimensions according to RZ-0,5 to RZ-5,0.
- Steel stand.
- A cable guide is provided on the support.
- Self-lubricating bearings.

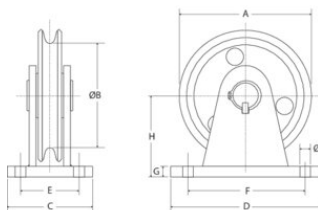
... [Read more](#)

Marking: According to standard, CE-marked

Standard: EN 13157, EN 12100

RBZ sheaves, supported

Blueprint



Technical data

Part code	GTIN No.	Rope Ø range mm	WLL	Model	A mm	B mm	C mm	D mm	E mm	F mm	G mm	H mm	I mm	Weight
3064001	8717365025624	5-6	0.5	RBZ-0.5	150	125	82	115	55	88	15	92	11.5	3.25
3064003	8717365025631	8-10	1	RBZ-1.0	235	200	108	187	70	150	20	138	18	10.6
3064005	8717365025648	12-14	2	RBZ-2.0	325	280	143	260	95	212	25	190	23	31
3064007	8717365025655	16-18	3	RBZ-3.0	400	340	188	330	130	242	30	236	28	52