

REMA RMBC Beam clamp

Product information



Adjustable spindle beam clamp for establishing a semi-permanent suspension point.

Properties

- Compact design and low own weight.
- Easy mounting.

... [Read more](#)

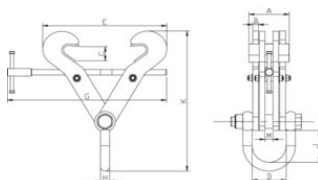
Marking: According to standard, CE-marked

Standard: EN 13155, EN 12100

Safety factor: 4

REMA RMBC Beam clamp

Blueprint



Technical data

Part code	GTIN No.	WLL ton	Beam width mm	Model	A mm	B mm	C mm	D mm	E maxmm mm	G mm	H mm	J mm	K minmm mm	M mm	Weight kg
3318201	8717365114649	2	76-190	RMBC-2T	125	6	27	107	272	276	20	85	254	42.5	4
3318203	8717365114656	3	76-190	RMBC-3T	130	14	27	107	272	276	20	85	254	42.5	8
3318205	8717365114663	5	150-305	RMBC-5T	140	14	46	122	450	409	25	99	319	57.5	15
3318206	8717365114670	6	203-457	RMBC-6T	140	14	55	116	600	559	25	99	418	50	18.8
3318210	8717365114687	10	203-457	RMBC-10T	140	20	55	119	600	559	32	99	418	28	28
3318215	8717365114694	15	203-457	RMBC-15T	175	20	76	120	681	660	40	185	555	28	47
3318216	8717365114700	15	406-610	RMBC-15T	175	20	76	120	834	810	40	185	634	28	52.8