

COBK beam lifting clamp

Product information



COBK beam lifting clamp is made with a safety mechanism that makes sure that the beam cannot slide out of the clamp during transport. The clamp is locked in open and closed position.

Application

- For horizontal lifting, transportation and stacking of steel (H) beams, profiles and structures.
- Jaw openings available from: 3 to 20 mm.

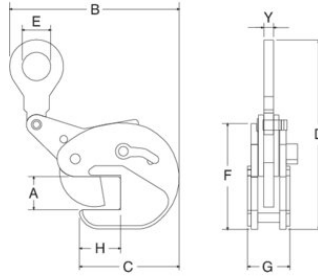
[... Read more](#)

Marking: According to standard, CE-marked
Standard: EN 12100, EN 13155

Safety factor: 5

COBK beam lifting clamp

Blueprint



Technical data

Part code	GTIN No.	WLL ton	Jaw width mm	Model	A mm	B mm	C mm	D mm	E mm	F mm	G mm	H mm	Y mm	Weight kg
3313022	8717365259081	2	3-20	COBK-2.0	3-20	285	157	295	64	155	67	65	17	19