

C804 Weldable eye

Product information



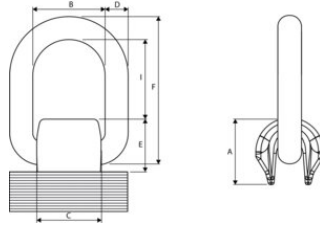
Red finish. For welding on machine parts or truck chassis. Ideal for anchoring and cargo fixation. Can be loaded in any direction. Adhere to welding requirements! [... Read more](#)

Marking: According to standard, CE-marked
Standard: EN 1677-1

Safety factor: 4

C804 Weldable eye

Blueprint



Technical data

Part code	Code	WLL	Model	A mm	B mm	C mm	D mm	E mm	F mm	I mm	Weight
2677101	8717365180774	1.12	C80401M-1.12	35	41	36	13	28	66	40	0.39
2677102	8717365180781	2	C80402M-2	38	42	39	13	33	74	44	0.51
2677103	8717365180798	3.15	C80403M-3.15	42	45	43	17	34	80	49	0.7
2677105	8717365180804	5.3	C80405M-5.3	60	55	50	22	44	95	55	1.5
2677108	8717365180811	8	C80408M-8	70	70	65	26	53	108	70	2.6
2677115	8717365180828	15	C80415M-15	90	97	90	34	73	155	92	5.85