

C810FX lifting points (G10)

Product information



CARTEC

Features: Tighten hand-tight in load direction.

Marking: According to standard, CE-marked

Standard: EN 1677-1

Note: Rotatable through 360°.

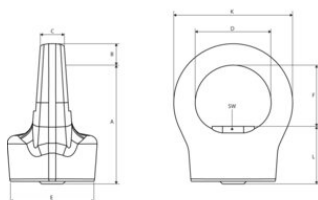
Warning: Not rotatable under load.

Safety factor: 4

Grade: 10

C810FX lifting points (G10)

Blueprint



Technical data

Part code	Code	WLL ton	Thread mm	Model	A mm	B mm	C mm	D mm	E mm	F mm	M x Lmm mm	K mm	SW mm	Weight kg
2611508	8717365115127	0.3	M8	C810FX-M8-0.3T	44.5	8	10	29	32	23	M8 x 21.5	45	13	0.17
2611510	8717365115134	0.4	M10	C810FX-M10-0.4T	44.5	8	10	29	32	23	M10 x 21.5	45	14	0.2
2611512	8717365115141	0.75	M12	C810FX-M12-0.75T	53.5	11	11	34	44	27	M12 x 26.5	56	16	0.39
2611516	8717365115158	1.5	M16	C810FX-M16-1.5T	59.5	13	14.5	39	56	29	M16 x 30.5	65	21	0.69
2611520	8717365115165	2.3	M20	C810FX-M20-2.3T	67	14	17	42	58	34	M20 x 33.0	70	26	0.71
2611524	8717365115172	3.2	M24	C810FX-M24-3.2T	80	18	19	52	73	40	M24 x 40.0	30	30	1.7
2611530	8717365115189	4.5	M30	C810FX-M30-4.5T	101	22	27	62	80	50	M30 x 51.0	106	36	2.44