

C806X lifting point

Product information



CARTEC

Marking: According to standard, CE-marked

Standard: EN 1677-1

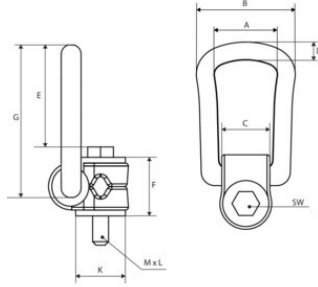
Note: Rotatable through 360°, foldable 90°.

Warning: Not rotatable under load.

Safety factor: 4

C806X lifting point

Blueprint



Technical data

Part code	Code	WLL	Thread mm	Model	A mm	B mm	C mm	D mm	E mm	G mm	K mm	M mm	L mm	SW mm	Weight
2611208	8717365176029	0.3	M8	C806X-M8x15-0.3T	34	57	24	10	43	78	25	M8	15	13	0.28
2611212	8717365176043	1	M12	C806X-M12x23-1.0T	38	66	30	13,5	40	85	32	M12	23	19	0.5
2611216	8717365176050	1.5	M16	C806X-M16x24-1.5T	38	66	30	13,5	38	85	32	M16	24	24	0.51
2611220	8717365176067	2.5	M20	C806X-M20x31-2.5T	55	87	48	16	54	111	45	M20	31	30	1.25
2611224	8717365176074	4	M24	C806X-M24x37-4.0T	55	87	48	16	51	111	45	M24	37	36	1.3
2611230	8717365176081	5	M30	C806X-M30x45-5.0T	66	109	54	22,5	62	145	60	M30	45	46	3.25
2611236	8717365176098	7	M36	C806X-M36x50-7.0T	66	109	54	22,5	60	145	60	M36	50	55	3.3
2611242	8717365176104	10	M42	C806X-M42x75-10T	78	136	62	28	86	190	70	M42	75	65	11.2
2611243	8717365176111	15	M42	C806X-M42x63-15T	97	169	68	36	121	242	85	M42	63	65	6.5
2611248	8717365176128	20	M48	C806X-M48x71-20T	97	169	68	36	117	242	95	M48	71	75	11.6
2611210	8717365176036	63	M10	C806X-M10x15-0.63T	34	57	24	10	42	78	25	M10	15	17	0.29