

WCL webbing connecting link (Grade 10)

Product information

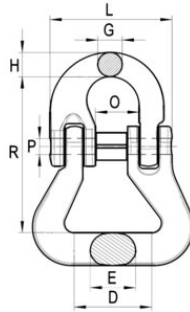


Marking: According to standard, CE-marked
Standard: EN 1677-1, EN 818, DIN 17115

Safety factor: 4
Grade: 10

WCL webbing connecting link (Grade 10)

Blueprint



Technical data

Part code	Code	WLL	Size	Model	D mm	E mm	G mm	H mm	O mm	R mm	P x L (mm) mm	Weight
2683008	8717365177774	2.5	8	WCL-8	30	18	10	11,5	18	66	6,3 x 53	0.3
2683010	8717365177781	4	10	WCL-10	40	22	12,6	12,6	22,5	81	8 x 63	0.6
2683013	8717365177798	6.7	13	WCL-13	50	27,5	16,7	19	27,5	104	10 x 79	1.1