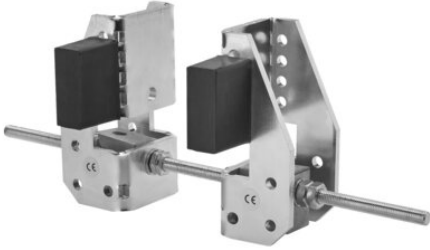


REMA beam buffers zinc

Product information

REMA adjustable buffers are applied to a monorail I / H profile track with a flat flange as an addition to your trolley-hoist system.
KB2 zinc coated

... [Read more](#)



Marking: CE-marked

REMA beam buffers zincd

Technical data

Part code	GTIN No.	Model	Wheels diameter mm	Flange width mm	Max flange thickness mm	Weight kg
4468300	8717365115110	KB2	60-160	82-300	7-25	2.5