

Portable swivel davit 125-250-500

Product information



Portable ergonomic modern design swivel davit for lifting.
Easily foldable, ready to use in a few seconds.
Integrated winch.
Including 8 meter wire rope (d5 mm) with hook

Specifications:

- Easy to transport, only 25 kg
- 360 degrees rotation over a built in ball bearing
- Maintenance free
- Adjustable crank
- The numbers in the product name correspond with the hoisting capacities on the first cable layer
- Beam reach differs from 60cm, 80cm to 100cm

Optional:

- zinc-plated finish (6 - 8 micron) (EV)
- stainless steel grade SAE 316 (SST316)
- ATEX certified (EX)

Accessories:

- floor, wall and in-cement floor sockets
- carry bag and rain protection cover

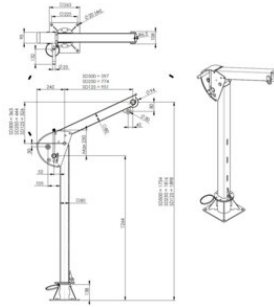
... [Read more](#)

Marking: According to standard, CE-marked
Standard: EN 13157

Safety factor: 4:1

Portable swivel davit 125-250-500

Blueprint



Technical data

| Part code | Code | WLL ton | Model | Rope Ø mm | Lift/crank turn (mm) | Rope capacity m | Hand force max. kg | WLL Lifting outer layer (kg) | Weight kg |
|-----------|---------------|---------|-------|-----------|----------------------|-----------------|--------------------|------------------------------|-----------|
| 3750125 | 8717365187780 | 0.125 | SD125 | 4 | 20 | 18 | 10 | 125 | 30 |
| 3750250 | 8717365187797 | 0.25 | SD250 | 4 | 20 | 18 | 10 | 250 | 30 |
| 3750500 | 8717365187803 | 0.5 | SD500 | 5 | 20 | 13 | 10 | 268 | 30 |